

TECHNICAL SPECIFICATION

00010 - M5673086000

Specification

"VENT VALVE PARTS

PART NAME : COMPLETE ASH INTAKE VALVE ASSEMBLY

DRAWING & POSITION NUMBER : NTPC/AHP/AIV/ALVINLET/200NB

ADDITIONAL INFORMATION : FLAP TYPE

AT ALV INLET

WITH CYLINDER

VALVE SIZE:200NB"

00020 - M5673086001

Specification

"VENT VALVE,OEM / PARTS

PART NAME : VALVE BODY

DRAWING & POSITION NUMBER : NTPC/AHP/AIV/ALVINLET/200NB &

1

MATERIAL : ALLOY CAST IRON

EQUIPMENT NAME : ASH INTAKE VALVE

ADDITIONAL INFORMATION : FLAP TYPE

AT ALV INLET

VALVE SIZE:200 NB, HARDNESS:250 BH (MIN)"

00030 - M5673086004

Specification

"VENT VALVE,OEM / PARTS

PART NAME : DISC ARM

DRAWING & POSITION NUMBER : NTPC/AHP/AIV/ALVINLET/200NB &

5

MATERIAL : CAST IRON

EQUIPMENT NAME : ASH INTAKE VALVE

ADDITIONAL INFORMATION : FLAP TYPE

AT ALV INLET

VALVE SIZE:200 NB, MATERIAL SPEC:IS 210 GRADE FG260"

00040 - M5673086005

Specification

"VENT VALVE,OEM / PARTS

PART NAME : DISC

DRAWING & POSITION NUMBER : NTPC/AHP/AIV/ALVINLET/200NB &

6A

MATERIAL : MILD STEEL

EQUIPMENT NAME : ASH INTAKE VALVE

ADDITIONAL INFORMATION : FLAP TYPE

AT ALV INLET

VALVE SIZE:200 NB,10 MM THICK (MIN)"

00050 - M5673086006

Specification

"VENT VALVE,OEM / PARTS

PART NAME : DISC LINER

DRAWING & POSITION NUMBER : NTPC/AHP/AIV/ALVINLET/200NB &

6B

MATERIAL : STAINLESS STEEL 420

EQUIPMENT NAME : ASH INTAKE VALVE

ADDITIONAL INFORMATION : FLAP TYPE

AT ALV INLET

VALVE SIZE:200 NB,10 MM THICK (MIN), HARDNESS:350 BHN (MIN)"

NTPC Limited

(A Government of India Enterprise)

00060 - M5673086007**Specification**

"VENT VALVE,OEM / PARTS

PART NAME :SEAL HOLDER

DRAWING & POSITION NUMBER :NTPC/AHP/AIV/ALVINLET/200NB &
7

MATERIAL :MILD STEEL

EQUIPMENT NAME :ASH INTAKE VALVE

ADDITIONAL INFORMATION :FLAP TYPE
AT ALV INLET

VALVE SIZE:200 NB"

00070 - M5673086008**Specification**

"VENT VALVE,OEM / PARTS

PART NAME :SEAT (REPLACEABLE TYPE)

DRAWING & POSITION NUMBER :NTPC/AHP/AIV/ALVINLET/200NB &
7A

MATERIAL :ALLOY CAST IRON

EQUIPMENT NAME :ASH INTAKE VALVE

ADDITIONAL INFORMATION :FLAP TYPE
AT ALV INLET

VALVE SIZE:200 NB, HARDNESS:250 BHN (MIN)"

00080 - M5673086009**Specification**

"VENT VALVE,OEM / PARTS

PART NAME :SEAL

DRAWING & POSITION NUMBER :NTPC/AHP/AIV/ALVINLET/200NB &
7B

MATERIAL :NEOPRENE RUBBER

EQUIPMENT NAME :ASH INTAKE VALVE

ADDITIONAL INFORMATION :FLAP TYPE
AT ALV INLET

VALVE SIZE:200 NB, SHORE HARDNESS:70+/-10 A"

00090 - M5673086013**Specification**

"VENT VALVE,OEM / PARTS

PART NAME :SPRING

DRAWING & POSITION NUMBER :NTPC/AHP/AIV/ALVINLET/200NB &
22

MATERIAL :SPRING STEEL

EQUIPMENT NAME :ASH INTAKE VALVE

ADDITIONAL INFORMATION :FLAP TYPE
AT ALV INLET

VALVE SIZE:200 NB"

00100 - M5673086023**Specification**

"VENT VALVE,OEM / PARTS

PART NAME :BUSH

DRAWING & POSITION NUMBER :NTPC/AHP/AIV/ALVINLET/200NB &
13

MATERIAL :BRONZE

EQUIPMENT NAME :ASH INTAKE VALVE

ADDITIONAL INFORMATION :FLAP TYPE
AT ALV INLET

VALVE SIZE:200 NB"

00110 - M5673096001

NTPC Limited

(A Government of India Enterprise)

Specification

"VENT VALVE,OEM / PARTS
 PART NAME :CASING
 DRAWING & POSITION NUMBER :NTPC/AHP/DOUBLE DISC VV/300NB
 & 1
 MATERIAL :CAST IRON
 EQUIPMENT NAME :DOUBLE DISC VALVE
 VALVE SIZE:300 NB, MATERIAL SPEC:AS PER IS 210 GR FG260"

00120 - M5673096002**Specification**

"VENT VALVE,OEM / PARTS
 PART NAME :DISTANCE PIECE
 DRAWING & POSITION NUMBER :NTPC/AHP/DOUBLE DISC VV/300NB
 & 2
 MATERIAL :CAST IRON
 EQUIPMENT NAME :DOUBLE DISC VALVE
 VALVE SIZE:300 NB, MATERIAL SPEC:AS PER IS 210 GR FG260"

00130 - M5673096004**Specification**

"VENT VALVE,OEM / PARTS
 PART NAME :SEAT
 DRAWING & POSITION NUMBER :NTPC/AHP/DOUBLE DISC VV/300NB
 & 3
 MATERIAL :STAINLESS STEEL 440C
 EQUIPMENT NAME :DOUBLE DISC VALVE
 VALVE SIZE:300 NB, HARDNESS:500 BHN (MIN)"

00140 - M5673096005**Specification**

"VENT VALVE,OEM / PARTS
 PART NAME :DISC HOLDER
 DRAWING & POSITION NUMBER :NTPC/AHP/DOUBLE DISC VV/300NB
 & 4
 EQUIPMENT NAME :DOUBLE DISC VALVE
 VALVE SIZE:300 NB,MATERIAL SPEC:ASTM A 216 GR WCB/ CAST STEEL, IS 1030
 GR 27/54"

00150 - M5673096006**Specification**

"VENT VALVE,OEM / PARTS
 PART NAME :DISC
 DRAWING & POSITION NUMBER :NTPC/AHP/DOUBLE DISC VV/300NB
 & 5
 MATERIAL :STAINLESS STEEL 440C
 EQUIPMENT NAME :DOUBLE DISC VALVE
 VALVE SIZE:300 NB, HARDNESS:500 BHN (MIN)"

00160 - M5673096007**Specification**

"VENT VALVE,OEM / PARTS
 PART NAME :DISC SPRING
 DRAWING & POSITION NUMBER :NTPC/AHP/DOUBLE DISC VV/300NB
 & 7
 MATERIAL :SPRING STEEL
 EQUIPMENT NAME :DOUBLE DISC VALVE
 VALVE SIZE:300 NB, MATERIAL SPEC:17.7 PH"

00170 - M5673096008**Specification**

"VENT VALVE,OEM / PARTS

NTPC Limited

(A Government of India Enterprise)

PART NAME :INLET/OUTLET ADAPTER
 DRAWING & POSITION NUMBER :NTPC/AHP/DOUBLE DISC VV/300NB
 & 9
 MATERIAL :ALLOY CAST IRON
 EQUIPMENT NAME :DOUBLE DISC VALVE
 VALVE SIZE:300 NB,HARDNESS:300 BHN (MIN)"

00180 - M5673096010

Specification

"VENT VALVE,OEM / PARTS

PART NAME :SPRING GUIDE PIN
 DRAWING & POSITION NUMBER :NTPC/AHP/DOUBLE DISC VV/300NB
 & 6

MATERIAL :STAINLESS STEEL 304
 EQUIPMENT NAME :DOUBLE DISC VALVE
 VALVE SIZE:300 NB"

00190 - M5673096011

Specification

"VENT VALVE,OEM / PARTS

PART NAME :SPRING SPACER
 DRAWING & POSITION NUMBER :NTPC/AHP/DOUBLE DISC VV/300NB
 & 8

MATERIAL :MILD STEEL
 EQUIPMENT NAME :DOUBLE DISC VALVE
 VALVE SIZE:300 NB"

00200 - M5673270163

Specification

AHP_COMMON,ON BASIS OF NTPC DRG / SPECS

PART NAME : VENT VALVE FOR ALV
 DRAWING & POSITION NUMBER : MTPS/AHD/ALV/100
 DIMENSION : 100 NB

00210 - M5600000038

Specification

AHP_COMMON,ON BASIS OF NTPC DRG / SPECS

PART NAME : DOUBLE DISC VALVE ASSEMBLY
 APPLICATION : ALV OUTLET
 DRAWING & POSITION NUMBER : NTPC/SSTPP/AHM/ALVDISCHARGE VALVE/GA/01
 DIMENSION : 200 NB

00220 - M5673086002

Specification

"VENT VALVE,OEM / PARTS

PART NAME :OUTLET BOX
 DRAWING & POSITION NUMBER :NTPC/AHP/AIV/ALVINLET/200NB &
 2

MATERIAL :MILD STEEL
 EQUIPMENT NAME :ASH INTAKE VALVE
 ADDITIONAL INFORMATION :FLAP TYPE
 , AT ALV INLET

VALVE SIZE:200 NB, MATERIAL SPEC:I S2062, 10MM THICK"

00230 - M5673086003

Specification

"VENT VALVE,OEM / PARTS

PART NAME :VALVE LEVER
 DRAWING & POSITION NUMBER :NTPC/AHP/AIV/ALVINLET/200NB &
 4

NTPC Limited
(A Government of India Enterprise)

MATERIAL :MILD STEEL
EQUIPMENT NAME :ASH INTAKE VALVE
ADDITIONAL INFORMATION :FLAP TYPE
AT ALV INLET
VALVE SIZE:200 NB"

00240 - M5673086010

Specification

"VENT VALVE,OEM / PARTS
PART NAME :SHAFT
DRAWING & POSITION NUMBER :NTPC/AHP/AIV/ALVINLET/200NB &
9

MATERIAL :EN8
EQUIPMENT NAME :ASH INTAKE VALVE
ADDITIONAL INFORMATION :FLAP TYPE
AT ALV INLET
VALVE SIZE:200 NB"

00250 - M5673086011

Specification

"VENT VALVE,OEM / PARTS
PART NAME :SPRING SHACKLE
DRAWING & POSITION NUMBER :NTPC/AHP/AIV/ALVINLET/200NB &
14

MATERIAL :FORGED CARBON STEEL
EQUIPMENT NAME :ASH INTAKE VALVE
ADDITIONAL INFORMATION :FLAP TYPE
AT ALV INLET
VALVE SIZE:200 NB"

00260 - M5673086012

Specification

"VENT VALVE,OEM / PARTS
PART NAME :CYLINDER SHACKLE
DRAWING & POSITION NUMBER :NTPC/AHP/AIV/ALVINLET/200NB &
15

MATERIAL :MILD STEEL
EQUIPMENT NAME :ASH INTAKE VALVE
ADDITIONAL INFORMATION :FLAP TYPE
AT ALV INLET
VALVE SIZE:200 NBAP"

00270 - M5673086015

Specification

"VENT VALVE,OEM / PARTS
PART NAME :COVER PLATE
DRAWING & POSITION NUMBER :NTPC/AHP/AIV/ALVINLET/200NB &
26



MATERIAL :MILD STEEL
EQUIPMENT NAME :ASH INTAKE VALVE
ADDITIONAL INFORMATION :FLAP TYPE
AT ALV INLET
VALVE SIZE:200 NB"

00280 - M5673096000

Specification

"VENT VALVE,OEM / PARTS
PART NAME :COMPLETE DOUBLE DISC VALVE ASSEMBLY
DRAWING & POSITION NUMBER :NTPC/AHP/DOUBLE DISC VV/300NB
DOUBLE DISC VALVE, WITHOUT CYLINDER, AT SILO INLET"

STANDARD QUALITY PLAN



	Item :- Ash Handling Valve and Spares	SQP NO:	CPG-QA-SQP-M-020		P - 1/2	Prepared by ANKUSH BIRLA <small>Digitally signed by ANKUSH BIRLA Date: 2023.01.10 12:48:45 +05'30'</small> (Ankush Birla)	Reviewed by  (Ganpati Jha)	Approved by SUNIL MALANI <small>Digitally signed by SUNIL MALANI</small> (Sunil Malani)
		Rev.	01	Date	10.01.2023			

SL. NO.	COMPONENT / OPERATION	CHARACTERISTICS	QUANTUM OF CHECK		REFERENCE DOCUMENT	ACCEPTANCE NORM	FORMAT OF RECORD	D	AGENCY		REMARKS
			M	N					M	N	
A) Raw Material / Bought Out Items Checks											
1.	Body, Bonnet, Seat/ Slide/Gate/ Disc, Dome, Back seat, Disc Spring, Ring, Adapter (as applicable)	a.) Chemical & Mechanical Properties	1/ Heat	1/ Heat	Tender/PO specification / NTPC approved Drg/ DS / TS		TC/IR		P/V	V	
		b.) Hardness (for high hardness components)	100 %	100 %	Tender/PO specification / NTPC approved Drg/ DS / TS		TC/IR		P/V	V	
2.	Pneumatic cylinder (as applicable)	Operational check, stroke and Leakage Test	100 %	100 %	Tender/PO specification / NTPC approved Drg/ DS / TS		TC/IR		P/V	V	
3.	Shaft (as applicable)	a.) Chemical & Mechanical Properties incl. Hardness (for high hardness requirement)	1/ Heat	1/ Heat	Tender/PO specification / NTPC approved Drg/ DS / TS		TC/IR		P/V	V	
		b.) Ultrasonic Testing	100 %	100 %	ASTM A 388	Note 6	TC/IR		P/V	V	(for dia. ≥ 50 mm)
4.	Inflatable Seal (as applicable)	Hardness	1/ lot	1/lot	Tender/PO specification / NTPC approved Drg/ DS / TS		TC/IR		P/V	V	
B) Process / Assembly Checks											
	Machining of components as mentioned above (as applicable)	a.) Dimension	Mfr std	10%	Tender/PO specification / NTPC approved Drg/ DS / TS		TC/IR		P	V	
		b.) DPT	Mfr std	10%	ASTM E 165	No relevant Indication	TC/IR		P	V	
		c.) Leakage test of body	Mfr std	10%	Tender/PO specification / NTPC approved Drg/ DS/TS	No pressure drop	TC/IR		P	V	

Abbreviations :-

M	Manufacturer	P	Perform	IR	Inspection Record / Report
N	NTPC Ltd or authorized representative	W	Witness	TC	Test Certificate
TS/DS	Technical specification/Datasheet	V	Review of records	MTC	Manufacturer's Test Certificate
PO	Purchase Order	Mfr. Std.	Manufacturer Standard		

STANDARD QUALITY PLAN

	Item :- Ash Handling Valve and Spares	SQP NO:	CPG-QA-SQP-M-020		P - 2/2	Prepared by ANKUSH BIRLA <small>Digitally signed by ANKUSH BIRLA Date: 2023.01.10 12:49:04 +05'30'</small> (Ankush Birla)	Reviewed by  (Ganpati Jha)	Approved by SUNIL MALANI <small>Digitally signed by SUNIL MALANI</small> (Sunil Malani)
		Rev.	01	Date	10.01.2023			

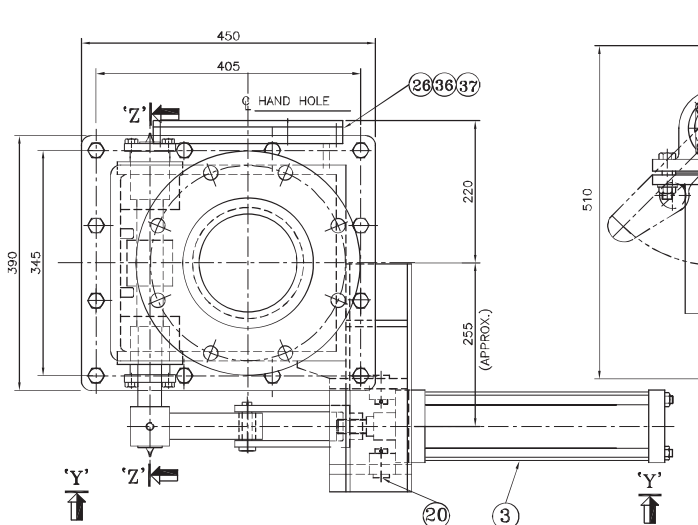
SL. NO.	COMPONENT/ OPERATION	CHARAC- TERISTICS	QUANTUM OF CHECK		REFERENCE DOCUMENT	ACCEPTANCE NORM	FORMAT OF RECORD	D	AGENCY		REMARKS
			M	N					M	N	
C) Finished Product / Final Inspection											
	Valve and Spares	a.) Dimension, completeness, Hardness (on high hardness accessible parts)	100 %	10%	Tender/PO specification / NTPC approved Drg/ DS / TS	IR		P	W		
		b.) Grade verification by PMI (for accessible SS/Alloy steel parts)	100 %	rand om	Tender/PO specification / NTPC approved Drg/ DS / TS	IR	Y	P	W		
		c.) Operation test (5 cycles)	100 %	10%	Tender/PO specification / NTPC approved Drg/ DS / TS	IR	Y	P	W		For Complete Valve only
		d.) Leakage test (Pneumatic/Hydro)	100 %	10%	Tender/PO specification / NTPC approved Drg/ DS / TS	IR	Y	P	W		For Complete Valve & Casing only

Notes :-

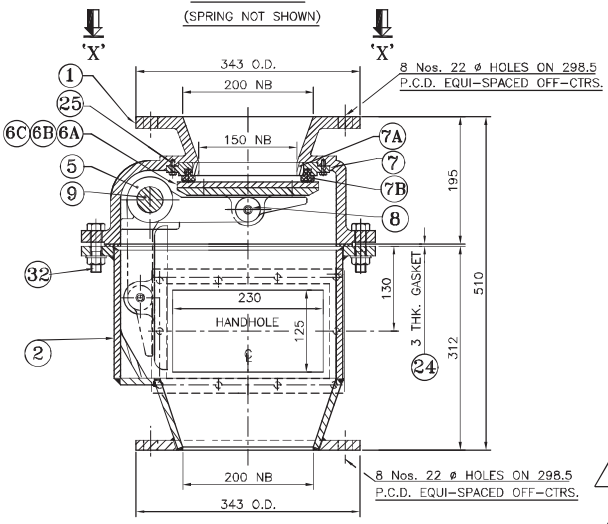
1. Y mark in Column 'D' means such document shall be furnished by the manufacturer / supplier.
2. Calibrated equipments required for performing the tests in presence of NTPC or authorized representative, shall be arranged by the supplier without any extra cost.
3. Witness by NTPC/authorized representative (wherever applicable) shall be on randomly chosen sample/s. NTPC shall review Mfrs test report for balance quantity.
4. Reference and Acceptance norms shall be derived from following in the same sequence-
 a) NTPC Approved drawing / data sheet b) NTPC tech specs c) Purchase Order d) Relevant national standard e) Relevant International standard f) Manufacturer's standard g) Good Engineering practices
5. In case of electrical actuator, test report for HV,IR and Functional checks shall be furnished for NTPC's review. In case of Pneumatic actuator, test report for leakage check, low pressure friction check and functional check shall be furnished for NTPC's review.
6. When Back Wall Echo (BWE) set to 100% Full Screen Height (FSH) in sound area of the material , a defect echo > 20% FSH is not acceptable. Also loss of BWE > 20% is not acceptable.

Abbreviations :-

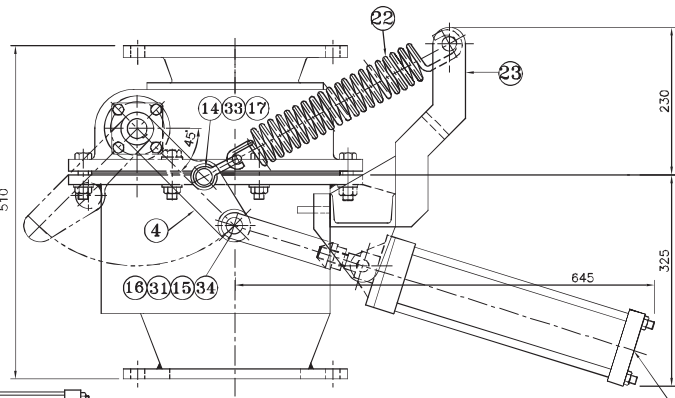
M	Manufacturer	P	Perform	IR	Inspection Record / Report
N	NTPC Ltd or authorized representative	W	Witness	TC	Test Certificate
TS/DS	Technical specification/Datasheet	V	Review of records	MTC	Manufacturer's Test Certificate
PO	Purchase Order	Mfr. Std.	Manufacturer Standard		



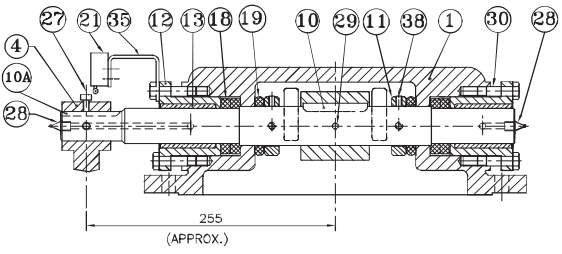
PLAN
VIEW: -'X X'
(SPRING NOT SHOWN)



SECTIONAL ELEVATION



VIEW: -'Y Y'



SECTION -'Z Z'

NOTES

- 1) ALL DIMENSION ARE IN mm.
- 4) TEST PRESSURE = 4 Kg/cm²
- 5) QUANTITY : 24 Nos.
- 6) FOR CYLINDER REF.NTPC DRG.NO.:9518-162-PVM-F-91B
MATL DRG.NO.: 532-40/608-01B
- 7) ALL NUTS & BOLTS SHALL BE HOT DIP GALVANISED.
- 8) WEIGHT : 230 K.g.
- 9) DISC COMPRISES OF TWO PARTS;PART NO.: 6A & 6B.

4" BORE X 250m.m.STROKE CYLINDER
REFER NOTE :- 6

APPROVED

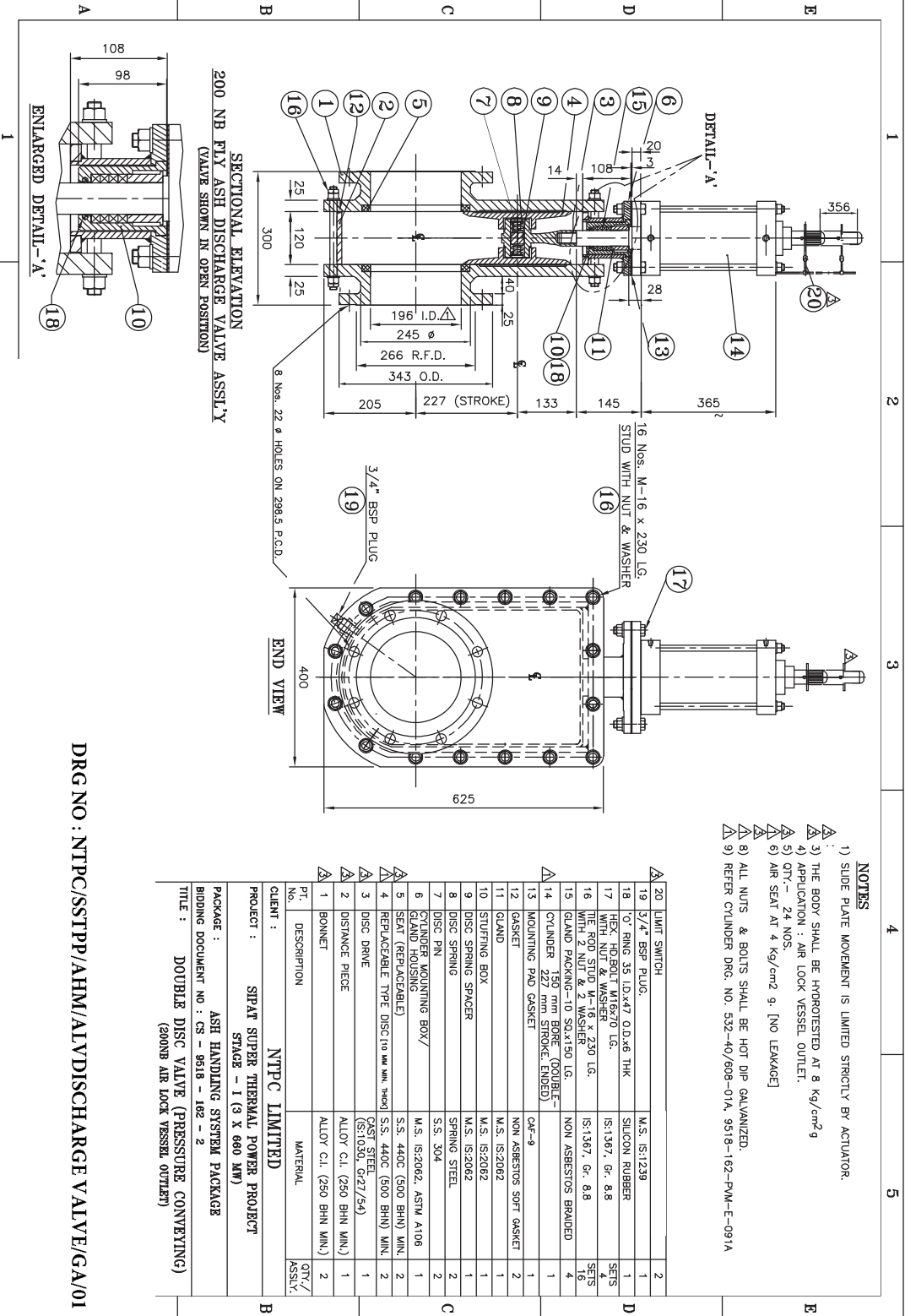
CAT-IV

VINOD BHOYAR

PT.No.	DESCRIPTION	MATERIAL	QTY.
38	SET SCREW M-6 x 12 LG. ROLLED THREAD END	M.S.	4
37	HEX. HD. BOLT M-10 x 40 LG. WITH NUT & WASHER	M.S. IS: 1363	10
36	3 THK. GASKET	NITRILE	1
35	LIMIT SWITCH BRACKET	M.S.	1
34	PIN	EN-8	1
33	PIN	EN-8	1
32	HEX. HD. BOLT M-16 x 70 LG. WITH NUT & WASHER	M.S. IS: 1363	12
31	4 Ø SPLIT PIN (3.7/3.5 Ø)	M.S. IS: 549	4
30	HEX. HD. SCREW M-10x40 LG.	M.S. IS: 1363	8
29	GRUB SCREW V-6 x 15 LG. TYPE 'A' FLAT END	M.S.	2
28	GREASE NIPPLE 1/8" BSP	BRASS CHROMIUM PLATED	2
27	SQ. HD. SCREW M-6x15 LG.	M.S.	2
26	COVER PLATE	M.S.	1
25	HEX. HD.SCREW M-6x15 LG.	M.S. IS: 1363	8
24	3 THK. GASKET	NEOPRENE	1
23	SPRING BRACKET	M.S.	1
22	SPRING	SPRING STEEL	1
21	LIMIT SWITCH		1
20	PIN	EN-8	2
19	'O' RING 39 I.D. x 6 Ø	SILICON RUBBER	2
18	ROPE GASKET- 10 Ø	GRAPHITED ASBESTOS	4
17	BUSH	BRONZE	1
16	BUSH	BRONZE	1
15	CYLINDER SHACKLE	M.S.	1
14	SPRING SHACKLE	FORGED CARBON STEEL	1
13	BUSH	BRONZE	2
12	GLAND	C.I. FG: 260	2
11	SHAFT STOP	M.S. IS: 2062	2
10A	KEY	C- 40	1
10	KEY	C- 40	1
9	SHAFT	EN-8	1
8	SPLIT PIPE PIN	S.S. 304	1
7B	SEAL RUBBER	NEOPRENE RUBBER (SHIC. HARDNESS 70S TO 75 A)	1
7A	SEAT (REPLACABLE TYPE & - SMOOTH FINISHED)	ALLOY C.I. 250- BHN MIN.	1
7	SEAL HOLDER	M.S.	1
6C	C'SK SCREW M-6 x 30 LG. WITH NUT & SP. WASHER	C.S.	4
6B	DISC LINER (10 THK.)MIN.	S.S. 420, 350 BHN MIN.	1
6A	DISC	M.S.(10 THK.MIN)	1
5	DISC ARM	C.I. FG-260	1
4	VALVE LEVER	M.S.	1
3	CYLINDER (DOUBLE ACTING)		1
2	OUTLET BOX (10 THK.)	M.S. I.S. : 2062	1
1	VALVE BODY	ALLOY C.I. 250 BHN. MIN	1
PT.No.	DESCRIPTION	MATERIAL	QTY.

CLIENT :	NTPC LTD.
PROJECT :	SIPAT SUPER THERMAL POWER PROJECT STAGE - I (3 X 660 MW)
PACKAGE :	ASH HANDLING AND DISPOSAL PLANT PACKAGE
SPECIFICATION NO :	CC : 9518-162-2
TITLE :	200NB ASH INTAKE VALVE

DRAWING NO : NTPC/AHP/AIV/ALVINLET/200NB



SECTIONAL ELEVATION
200 NB FLY ASH DISCHARGE VALVE ASS'Y
(VALVE SHOWN IN OPEN POSITION)

ENLARGED DETAIL - 'A'

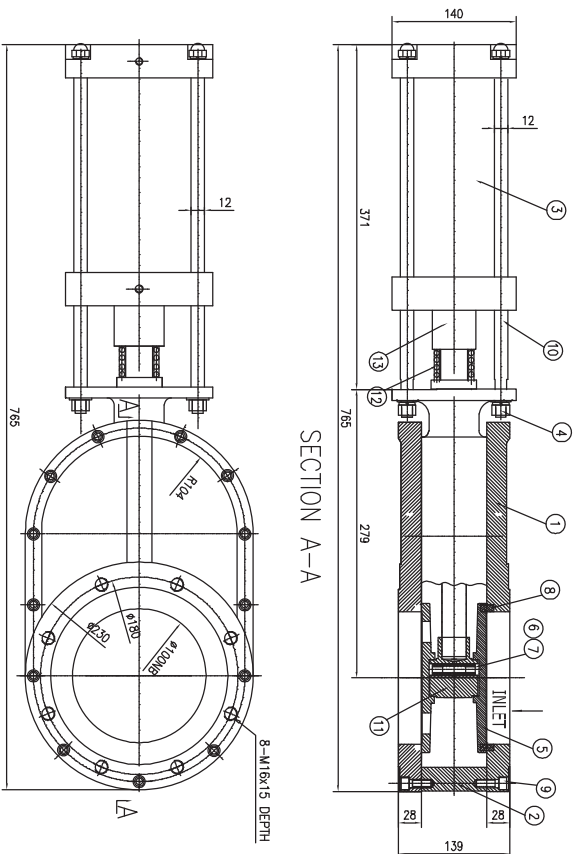
END VIEW

- NOTES**
- 1) SLIDE PLATE MOVEMENT IS LIMITED STRICTLY BY ACTUATOR.
 - 2) THE BODY SHALL BE HYDROTESTED AT 8 Kg/cm²g
 - 3) APPLICATION : AIR LOCK VESSEL OUTLET.
 - 4) QTY - 24 NOS.
 - 5) AIR SEAT AT 4 Kg/cm² g. [NO LEAKAGE]
 - 6) AIR SEAT AT 4 Kg/cm² g. [NO LEAKAGE]
 - 7) ALL NUTS & BOLTS SHALL BE HOT DIP GALVANIZED.
 - 8) REFER CYLINDER DRG. NO. 532-40/608-01A, 9518-162-PW-E-091A
 - 9) REFER CYLINDER DRG. NO. 532-40/608-01A, 9518-162-PW-E-091A

QTY./ ASS'Y.	DESCRIPTION	MATERIAL
2	20 LIMIT SWITCH	M.S. IS1239
1	19 3/4" BSP PLUG.	SILICON RUBBER
1	18 10" RING 35 I.D.x47 O.D.x6 THK	IS1367, Gr. 8.8
4	17 HEX HB BOLT M16x20 LG. WITH NUT & WASHER	IS1367, Gr. 8.8
16	16 THE ROD STUD M-16 x 230 LG. WITH 2 NUT & 2 WASHER	IS1367, Gr. 8.8
4	15 GLAND PACKING-10 SQ.x150 LG.	NON ASBESTOS BRAIDED
1	14 CYLINDER 150 mm BORE (DOUBLE-ENDED) 150 mm STROKE.	CAF-9
1	13 MOUNTING PAD GASKET	NON ASBESTOS SOFT GASKET
2	12 GASKET	M.S. IS2082
1	11 GLAND	M.S. IS2082
1	10 STUFFING BOX	M.S. IS2082
1	9 DISC SPRING SPACER	M.S. IS2082
2	8 DISC SPRING	SPRING STEEL
2	7 DISC PIN	S.S. 304
1	6 CYLINDER MOUNTING BOX/ GLAND HOUSING	M.S. IS2082, ASTM A106
2	5 SEAT (REPLACEABLE)	S.S. 440C (500 BHN) MIN.
2	4 REPLACEABLE TYPE DISC (to MIN. MIN. THICK)	S.S. 440C (500 BHN) MIN.
1	3 DISC DRIVE	CAST STEEL (S1:030, G27/54)
1	2 DISTANCE PIECE	ALLOY C.I. (250 BHN MIN.)
2	1 BONNET	ALLOY C.I. (250 BHN MIN.)

CLIENT : NTPC LIMITED
PROJECT : SIPAT SUPER THERMAL POWER PROJECT
STAGE - I (3 X 660 MW)
PACKAGE : ASH HANDLING SYSTEM PACKAGE
BIDDING DOCUMENT NO : CS - 9518 - 162 - 2
TITLE : DOUBLE DISC VALVE (PRESSURE CONVEYING)
(200NB AIR LOCK VESSEL OUTLET)

DRG NO : NTPC/SSTPP/AHM/ALVYDISCHARGE VALVE/GA/01



SECTION A-A

NO.	ITEM	QTY	MATERIAL
13	GLAND	1	M.S.
12	GLAND PACKING	1	NON ASBESTOS SOFT GASKET
11	DISC DRIVE	1	CAST IRON IS 210 FG 260
10	TIE ROD	4	M.S.
9	M12X30 ALLEN BOLT	26	IS1367 Gr.8.8
8	REPLACEABLE SEAT	2	SS HARDENED TO 350 BHN
7	DISC SPRING	2	SPRING STEEL
6	DISC PIN	6	SS 304
5	REPLACEABLE DISC	1	SS HARDENED TO 350 BHN
4	M16 NUTS & WASHER	4	IS1367 Gr.8.8
3	PNEUMATIC CYLINDER	1	125 BORE X 117 STROKE
2	DISTANCE PIECE	1	CAST IRON IS 210 FG 260
1	VALVE BODY	1	CAST IRON IS 210 FG 260

NTPC LIMITED.

NOTES:-

1. ALL DIMENSIONS ARE IN M.M.
4. WORKING PRESSURE - 4.0 kg/cm²
5. QTY. REQUIRED - 16 NOS.
6. APPLICATION: VENT / EQUALISING VALVE FROM ALV TO BH



TESTING OF VALVE

TEST	TYPE	PRESSURE	DURATION	REMARK
BODY	HYDROTEST	8.0 kg/cm ²	180 SEC	NO LEAKAGE
BODY	(PNEUMATIC ASSY)	4.5 kg/cm ²	60 SEC	NO LEAKAGE
SEAT	(AFTER ASSY)	4.5 kg/cm ²	60 SEC	NO LEAKAGE
SEAT	(AFTER ASSY)	4.5 kg/cm ²	60 SEC	NO LEAKAGE

REVISIONS		DATE	DRN.	CHKD.	DESCRIPTION

DRAWING NO : MTPS/AHD/LV/100

STANDARD TC / INSPECTION REPORT REQUIREMENT

	ITEM: Ash Handling Valve Spares	STCR NO: CPG-QA-STC-M-284	Prepared by	Approved by	
		Rev. 00	Date 29-03-2024	ANKUS H BIRLA <small>Digitally signed by ANKUSH BIRLA Date: 2024.03.29 10:50:05 +05'30'</small>	

Pre-Dispatch Inspection (PDI) by NTPC is not envisaged. Vendor, along with material, shall submit test certificates / internal inspection reports for following-

<u>Sl no.</u>	<u>Attribute / Test</u>	<u>Reference / Acceptance Norms</u>	<u>Remarks</u>
A)	Raw Material / Bought Out Items Checks		
1	Chemical Composition & Mechanical Properties incl. Hardness (as applicable)	Tender/PO specs/NTPC approved Drg/DS/relevant standard / Manufacturer's Standard	Chemical Composition not applicable for Cast Iron Components.
2	Ultra Sonic Testing (for Plate thickness \geq 25 mm & Dia. \geq 50 mm) – as applicable		
B)	Process / Assembly Checks		
1	DPT check on machining (as applicable)	Tender/PO specs/NTPC approved Drg/DS/relevant standard / Manufacturer's Standard	
2	Leakage Test of Body (as applicable)		
C)	Finished Product / Final Inspection / Testing		
1	Dimensional Check, Hardness Test (as applicable for high hardness components)	Tender/PO specs/NTPC approved Drg/DS/relevant standard / Manufacturer's Standard	

Notes :-

- TC / IR shall be from manufacturer's own lab or a NABL accredited lab or any third-party lab accredited as per ISO / IEC 17025.