

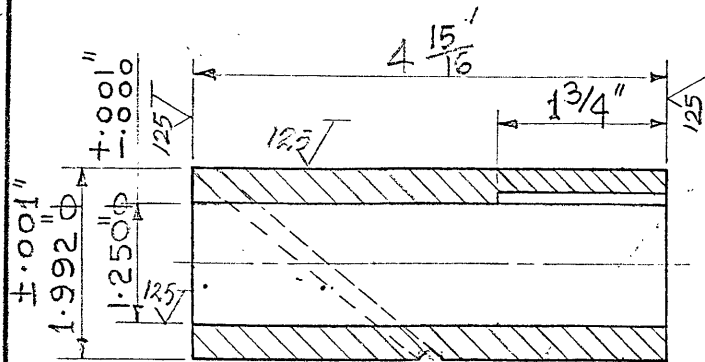
TECHNICAL CATALOGUE

SR.NO	Material Code	Material description	Quantity	UOM
1	300011497	BALL BEARING HOUSING AS PER DRG NO:450-M-133.	4	Piece
2	300011496	BEARING THIMBLE AS PER DRG NO:450-M- 118	4	Piece
3	300011498	MOTOR STAND AND COVER PLATE AS PER DRAWING NO. 4 50-M-264.	4	Piece
4	310001404	INTERMEDIATE HOUSING WITH GRAPHITE BUSHING WITH BUSH. PT. NO. 15. AS PER DRG.NO. 450-M-130.	2	Piece
5	300011501	IMPELLER 6IN DIA AS PER DRG NO :450-M -116	4	Piece
6	300011502	IMPELLER, NUT PT NO 19 AS PER DRG.NO. 450-M -122	4	Piece
7	300011503	CASING FOR DIRTY PIT SULPHUR PUMP AS PER DRG NO 450-M-134.	2	Piece
8	300011504	BALL BEARING HOUSING CAP PT NO 23	4	Piece
9	310001405	STUFFING BOX GLAND PT NO 24 AS PER DRG. NO 450- M-120.	4	Piece
10	300011506	CASING JOURNAL.MARK - 2 AS PER DRG. NO. 450- M-117	4	Piece
11	300011508	SPECIAL 900 DISCHARGE ELBOW FOR DIRTY PIT SULPHUR PU MP AS PER DRG.NO. 450/M/126	4	Piece
12	300011509	B B LOCK NUT & WASHER AS PER DRG.NO. 450-M -122	4	Piece
13	300011510	SUCTION COVER. DRAWING NO. 450-M-12 9	4	Piece
14	300011511	SPACER. AS PER DRG.NO. 450-M -119	4	Piece
15	300011512	IMPELLER 7 1/2 "DIA AS PER DRG NO :450-M -132	4	Piece
16	300011513	SHAFT SLEEVE. MARK - 1 AS PER DRG NO:450-M- 117	4	Piece
17	300011516	SHAFT FOR SHORT COLUMN PUMP. SIZE : 85-3/16" WITH BEARING LOCKNUT, END NUT & KEYS AS PER DRG.NO.450-M-122/B REV. C.	4	Piece
18	300011517	CAST IRON BUSH.MARK-2 AS PER DRAWING NO. 4 50-M-280. MATERIAL OF CONSTRUCTION:C.I. IS-210 GR. 40	4	Piece
19	300011500	SHAFT FOR LONG COLUMN PUMP WITH BEARING LOCKNUT, END NUT AND KEYS AS PER DRG. NO. 450-M-122 REV. C. LENGTH : 103-3/16 INCH.	4	Piece

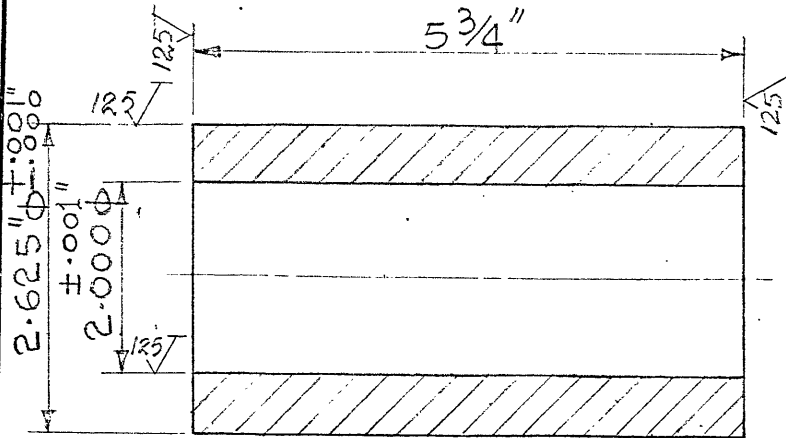
Sr. No.	INSTRUCTION FOR BIDDERS	
1	Delivery Period	Delivery period of material shall be 84 DAYS from the date of PO.
2	Guarantee/Warrantee Clause	Vendor shall give guarantee/warrantee for a period of 18 months from the date of supply or 12 months from the date of installation, whichever is earlier and submit certificate to that effect along with the supply.

3	Instruction for Bidder	1.VENDOR SHALL SUBMIT MATERIAL TEST CERTIFICATE, GUARANTEE/WARANTEE CERTIFICATE ALONG WITH SUPPLY. 2.THE MATERIAL SHALL BE PACKED PROPERLY TO AVOID ANY TRANSIT DAMAGE. ALL ITEMS SHALL BE MARKED WITH MATERIAL NUMBER PROPERLY ON EXTERNAL SURFACE AT VISIBLE LOCATION FOR EASY IDENTIFICATION.
4	Drawings	Attached.

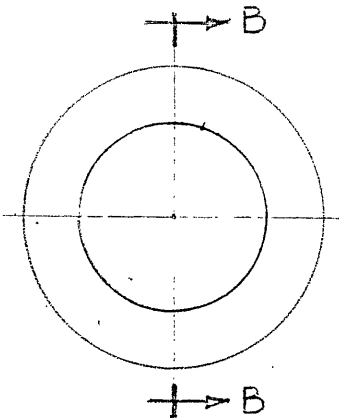
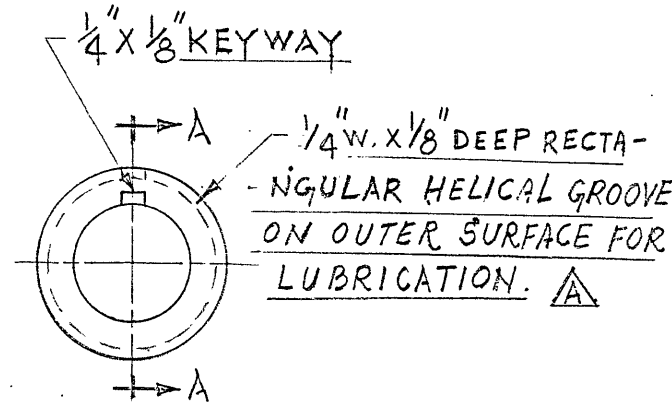
Submit this technical specifications with signed and stamped as a token of acceptance along with the bid document.



SECT-AA.
① SHAFT SLEEVE.



SECT.-BB.
② CASING JOURNAL



SN	BY	DATE	REVISIONS	APPD
A	Chm	29/84	ADDED OIL GROOVE ON SURFACE OF SHAFT SLEEVE AS PER P.E.S.V.	
B	VDB	15/84	CODE ADDED.	

NOTES :-

- ALL DIAMETERS TO BE FINISHED TO $\pm 0.002"$ OR ± 0.050 mm AND OTHER DIMENSIONS TO $\pm 0.005"$ OR ± 0.125 mm OTHERWISE STATED.
- DE - BURR ALL SHARP CORNERS.
- MACHINING :-..... SMOOTH FINE ¹²⁵
- EQUIPMENT CODE NO. :-
- STORE'S CODE NO. :- 2243129:ITEM-1
2243116/5: " -2
- ALL DIMENSIONS ARE IN :- INCHES/mm.

2	CASING JOURNAL	1	IS-210.40
1	SHAFT SLEEVE.	1	IS-210.40
MK NO.	DESCRIPTION	NO. OFF.	MATERIAL

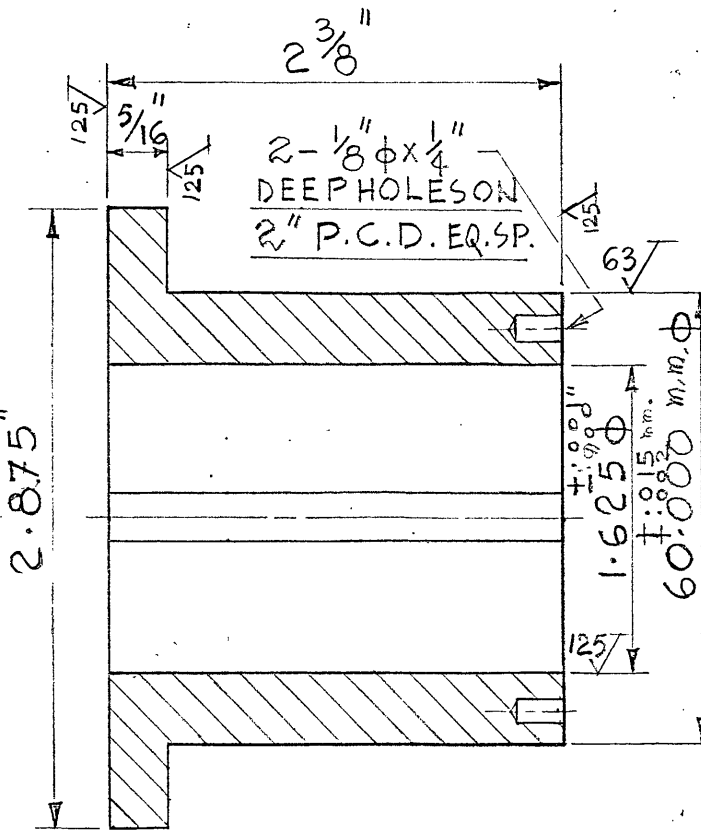
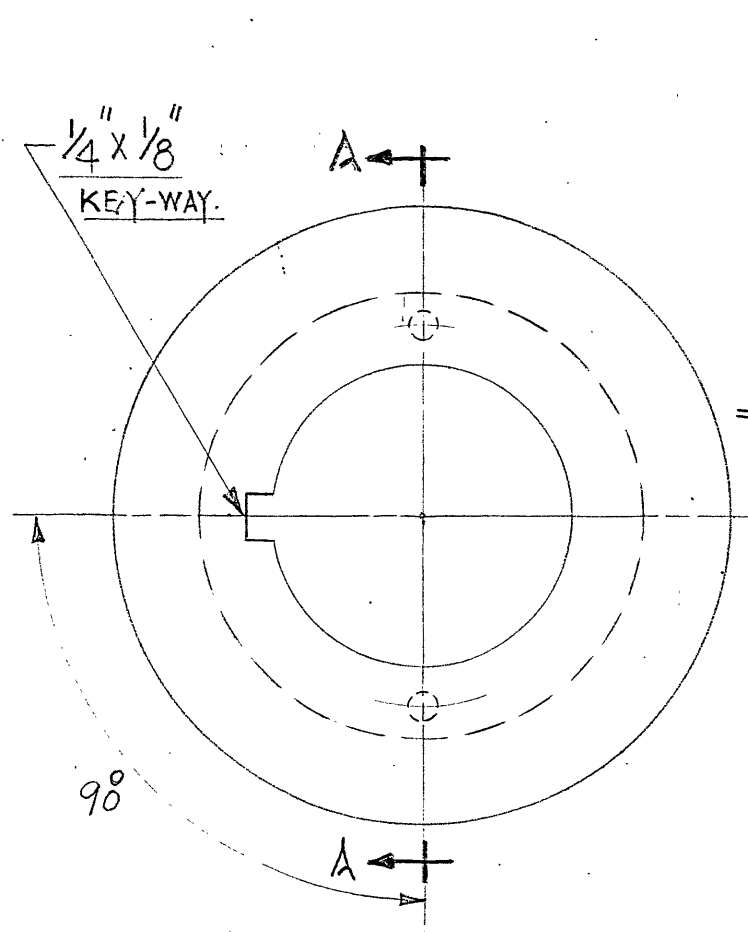
THE FERTILIZER CORPORATION OF INDIA LTD.

DRN	Chm	TROMBAY UNIT ⑤	
CHD.	VDB	SULPHURIC ACID PLANT. SHAFT SLEEVE AND CASING JOURNAL FOR SULPHUR PUMP.	
SUB.	VDB	SCALE $\frac{1}{2}" = 1"$	DATE 6/3/78 03/07/1
REC.	VDB	APPD. [Signature]	DRG. NO. 450-M-117/KB

PLANT ENGINEER	[Signature]
DESIGNATION	SIGNATURE
CERTIFIED BY ABOVE	

DO NOT SCALE THE DRAWING

IF IN DOUBT ASK



SECT.-BB.

SN	BY	DATE	REVISIONS	APPD
A				
B				

NOTES :-

1. ALL DIAMETERS TO BE FINISHED TO $\pm 0.002"$ OR ± 0.050 mm AND OTHER DIMENSIONS TO $\pm 0.005"$ OR ± 0.125 mm OTHERWISE STATED.
2. DE-BURR ALL SHARP CORNERS.
3. MACHINING: $\sqrt{63}$ SMOOTH $\sqrt{125}$ FINE
4. EQUIPMENT CODE NO. :-
5. STORE'S CODE NO. :-
6. ALL DIMENSIONS ARE IN :- INCHES/mm.

1	BEARING THIMBLE.	1	C. I.
MK NO.	DESCRIPTION	NO. OFF.	MATERIAL

THE FERTILIZER CORPORATION OF INDIA LTD.

DRN	cmr	TROMBAY UNIT	
SUB. CHD.		SULPHURIC ACID PLANT	
REC.		BEARING THIMBLE FOR	
		SULPHUR PUMP.	
		SCALE FULL SIZE.	DATE 6/3/78
		APPD. <i>[Signature]</i>	DRG. NO.
		A	450-M-118

PLANT ENGINEER	<i>[Signature]</i>
DESIGNATION	SIGNATURE

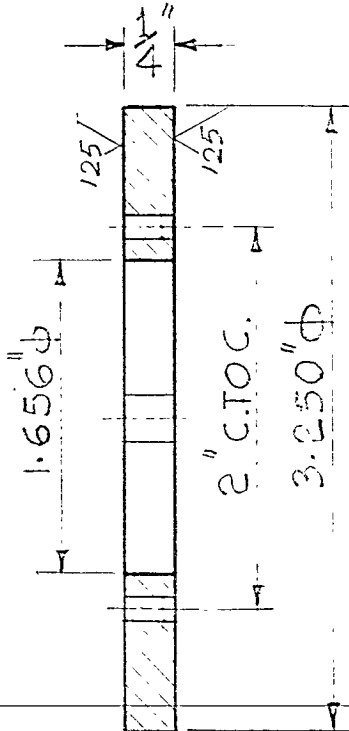
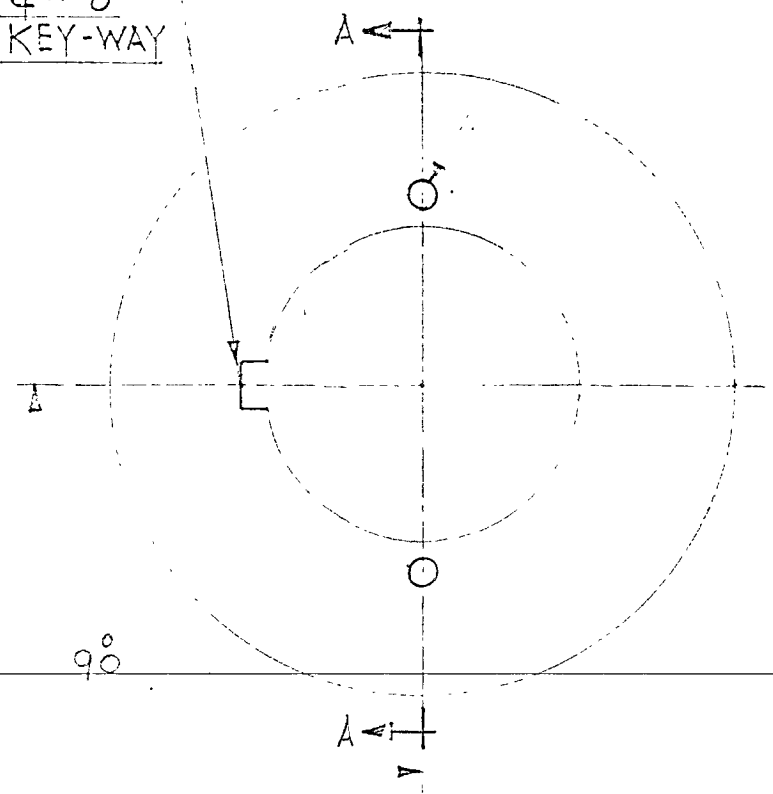
CERTIFIED BY ABOVE

DO NOT SCALE THE DRAWING

IF IN DOUBT ASK

1/4" x 1/8"
KEY-WAY

- 2 - 1/8" Ø HOLES.



SECT.-AA.

SN	BY	DATE	REVISIONS	APPD
A				
B				

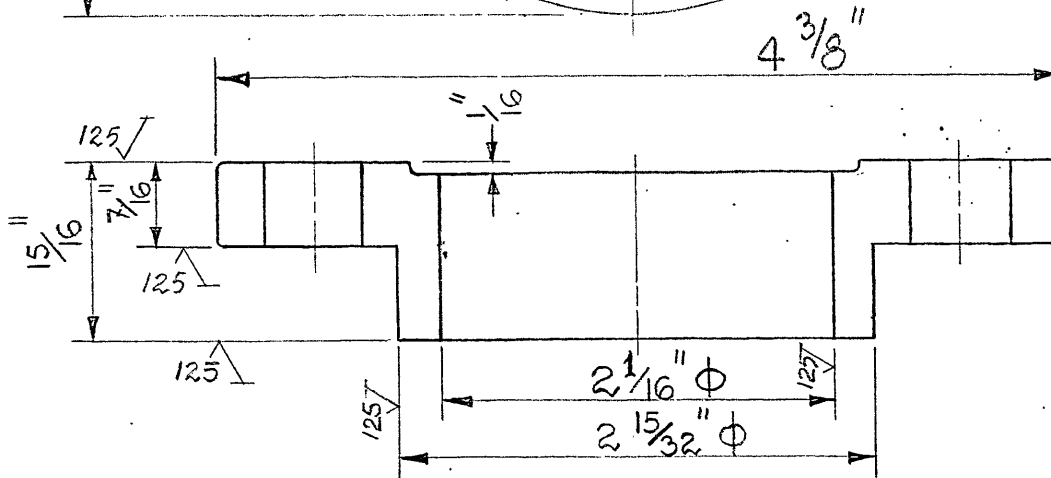
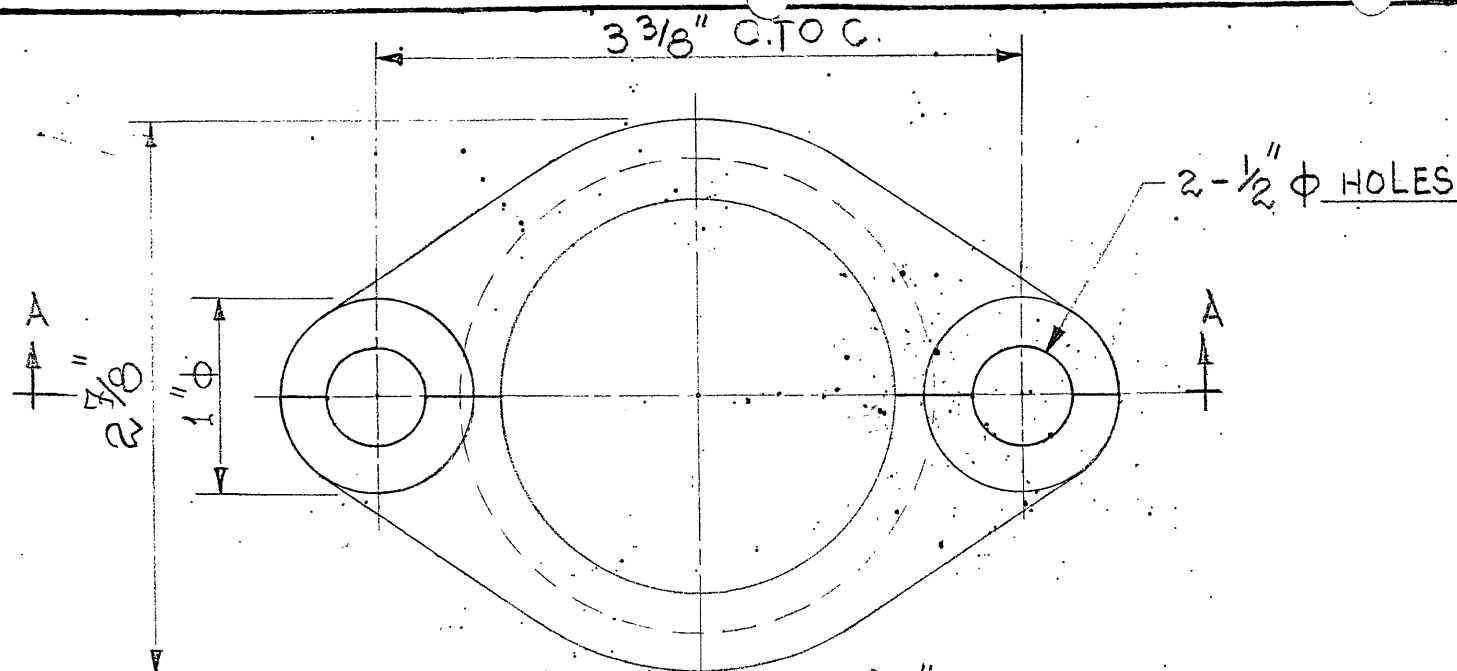
NOTES :-

1. ALL DIAMETERS TO BE FINISHED TO $\pm 0.002"$ OR ± 0.050 mm
AND OTHER DIMENSIONS TO $\pm 0.005"$ OR ± 0.125 mm
OTHERWISE STATED.
2. DE - BURR ALL SHARP CORNERS.
3. MACHINING :-..... SMOOTH ¹²⁵..... FINE
4. EQUIPMENT CODE NO. :-
5. STORE'S CODE NO. :-
6. ALL DIMENSIONS ARE IN :- INCHES/mm.

1		SPACER		1		S.S.304	
MK NO.		DESCRIPTION		NO. OFF.		MATERIAL	
THE FERTILIZER CORPORATION OF INDIA LTD.							
DRN		TROMBAY UNIT					
CHD.		SULPHURIC ACID PLANT					
SUB.		SPACER FOR SULPHUR PUMP.					
REC.		SCALE FULL SIZE		DATE		6/3/78	
		APPD.		A		DRG. NO.	
						450-M-119	

DO NOT SCALE THE DRAWING IF IN DOUBT ASK

PLANT ENGINEER	
DESIGNATION	SIGNATURE
CERTIFIED BY ABOVE	



GLAND FOLLOWER. VIEW-AA.
IN TWO HALVES.

SN	BY	DATE	REVISIONS	APPD
A				
B				

NOTES :-

- ALL DIAMETERS TO BE FINISHED TO $\pm 0.002"$ OR ± 0.050 mm
AND OTHER DIMENSIONS TO $\pm 0.005"$ OR ± 0.125 mm
OTHERWISE STATED.
- DE - BURR ALL SHARP CORNERS.
- MACHINING :-..... SMOOTH FINE¹²⁵
- EQUIPMENT CODE NO. :-
- STORE'S CODE NO. :- 2243114
- ALL DIMENSIONS ARE IN :- INCHES/mm.

1	GLAND FOLLOWER (IN TWO HALVES)	1	C.S.
MK NO.	DESCRIPTION	NO. OFF.	MATERIAL
THE FERTILIZER CORPORATION OF INDIA LTD.			
DRN	emw	TROMBAY UNIT ☉	
CHD.	Chait	SULPHURIC ACID PLANT. GLAND FOLLOWER FOR SULPHUR PUMP.	
SUB.		SCALE FULL SIZE	DATE 6/3/78
REC.		APPD. QNM	DRG. NO. A 450-M-120

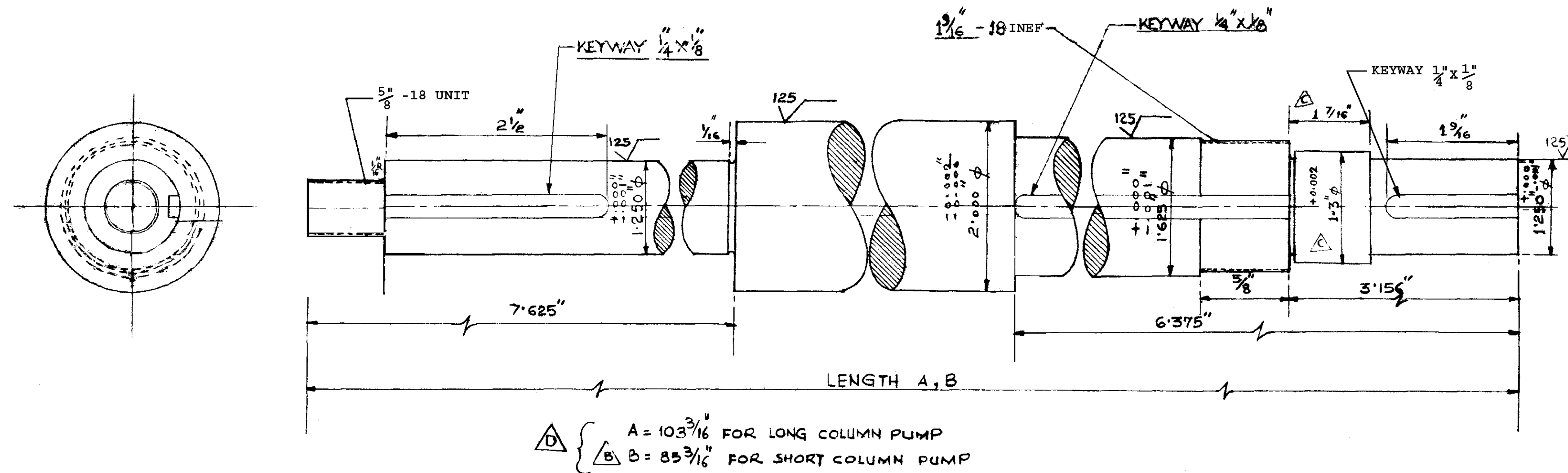
PLANT ENGINEER	<i>[Signature]</i>
DESIGNATION	SIGNATURE

DO NOT SCALE THE DRAWING

IF IN DOUBT ASK

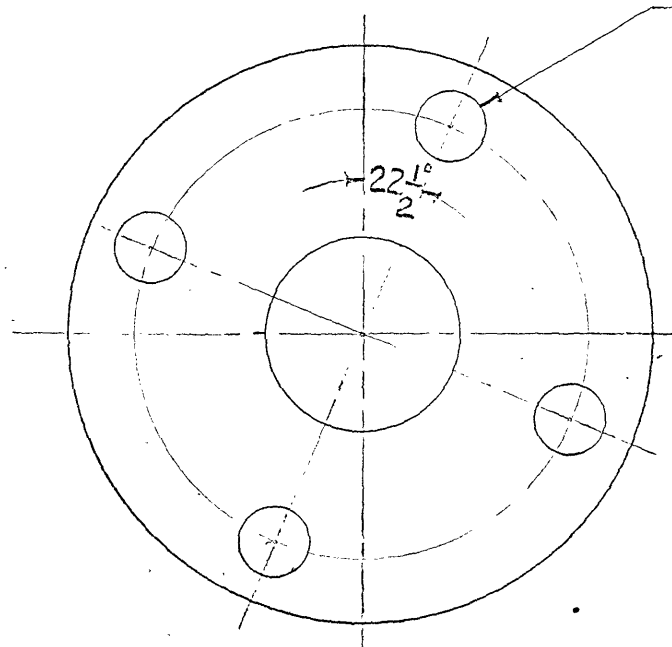
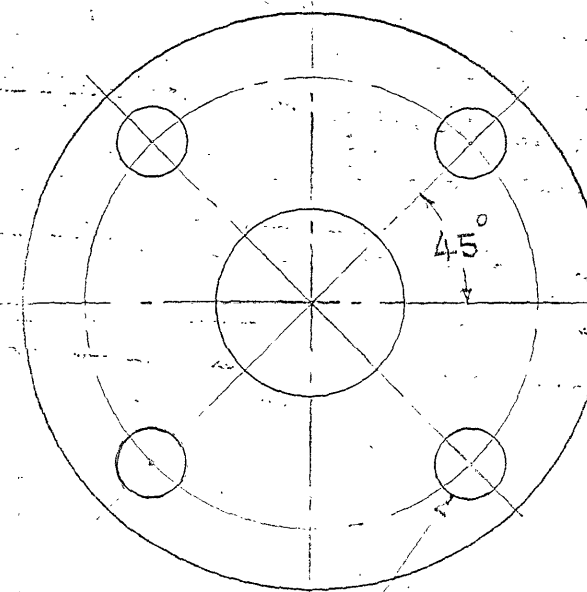
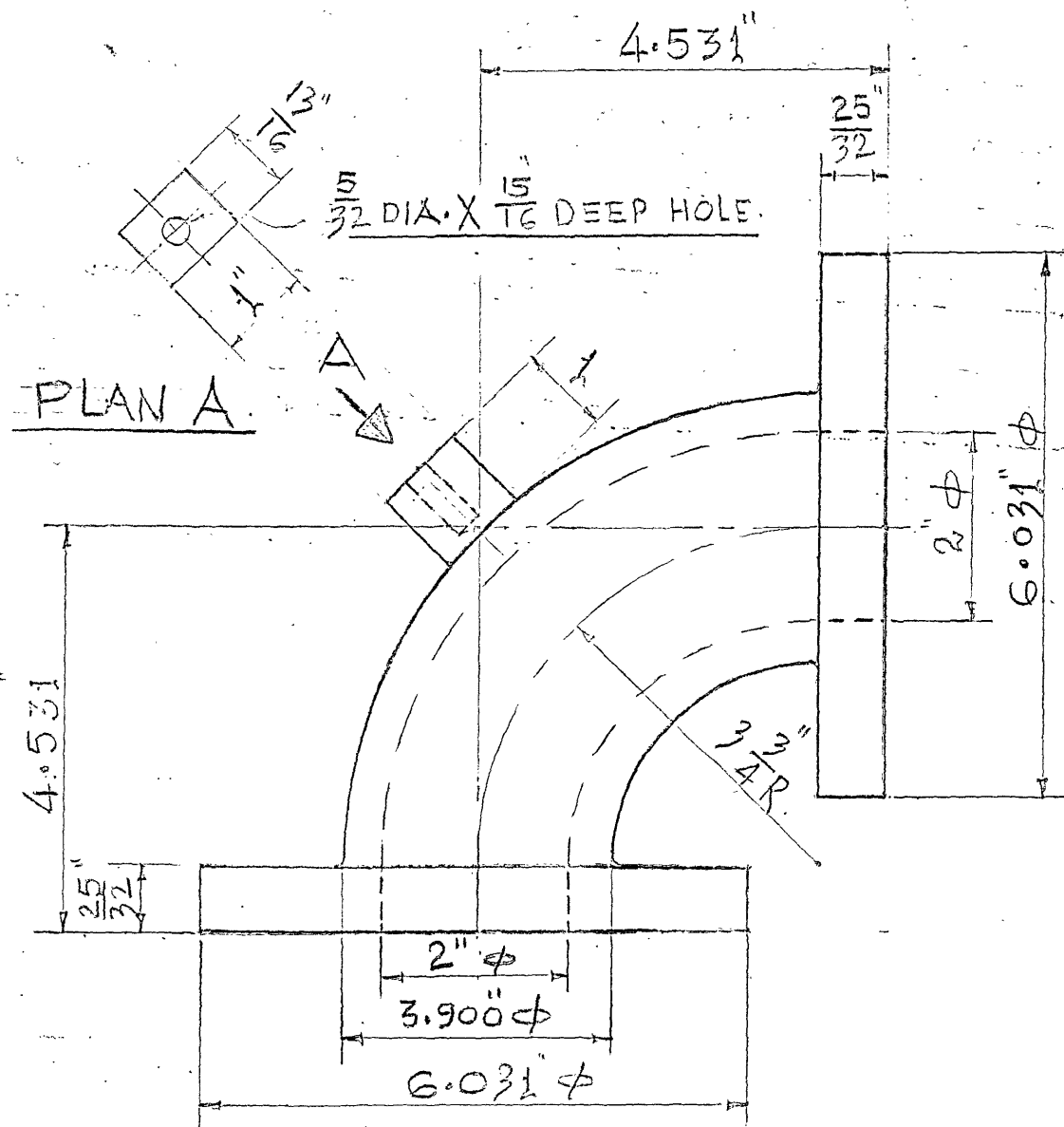
CERTIFIED BY ABOVE

CARBON STEEL. (BEARING LOCK NUT)



FILE NO.		RASHTRIYA CHEMICALS AND FERTILIZER LTD	
DRN <i>DRN</i>		TROMBAY UNIT	
CHD. <i>CHD.</i>		<u>SULPHURIC ACID PLANT</u>	
SUB.		<u>SHAFT WITH NUTS FOR SULPHUR</u>	
REC.		<u>PUMP</u>	
		SCALE 1:1	DATE-6/3/78
APPROVED <i>[Signature]</i>		DRG.NO.	REV
		450-M-122	C

S.N.	DATE	BY	REVISION	APPD.



4 NOS, 0.750 DIA. HOLE
ON 4.750" P.C.D.
EQUALLY SPACED.

NOTES:-

1. ALL DIA. TO BE FINISHED TO ± 0.002 AND OTHER DIMENSIONS TO ± 0.005 OTHERWISE STATED.
2. DE-BURR ALL SHARP CORNERS.
3. MACHINING: $\sqrt{250}$ MEDIUM.
4. EQUIPMENT CODE NO.
5. STORES CODE NO.
6. ALL DIMENSIONS ARE IN INCHES.
7. MATERIAL:- C.I.

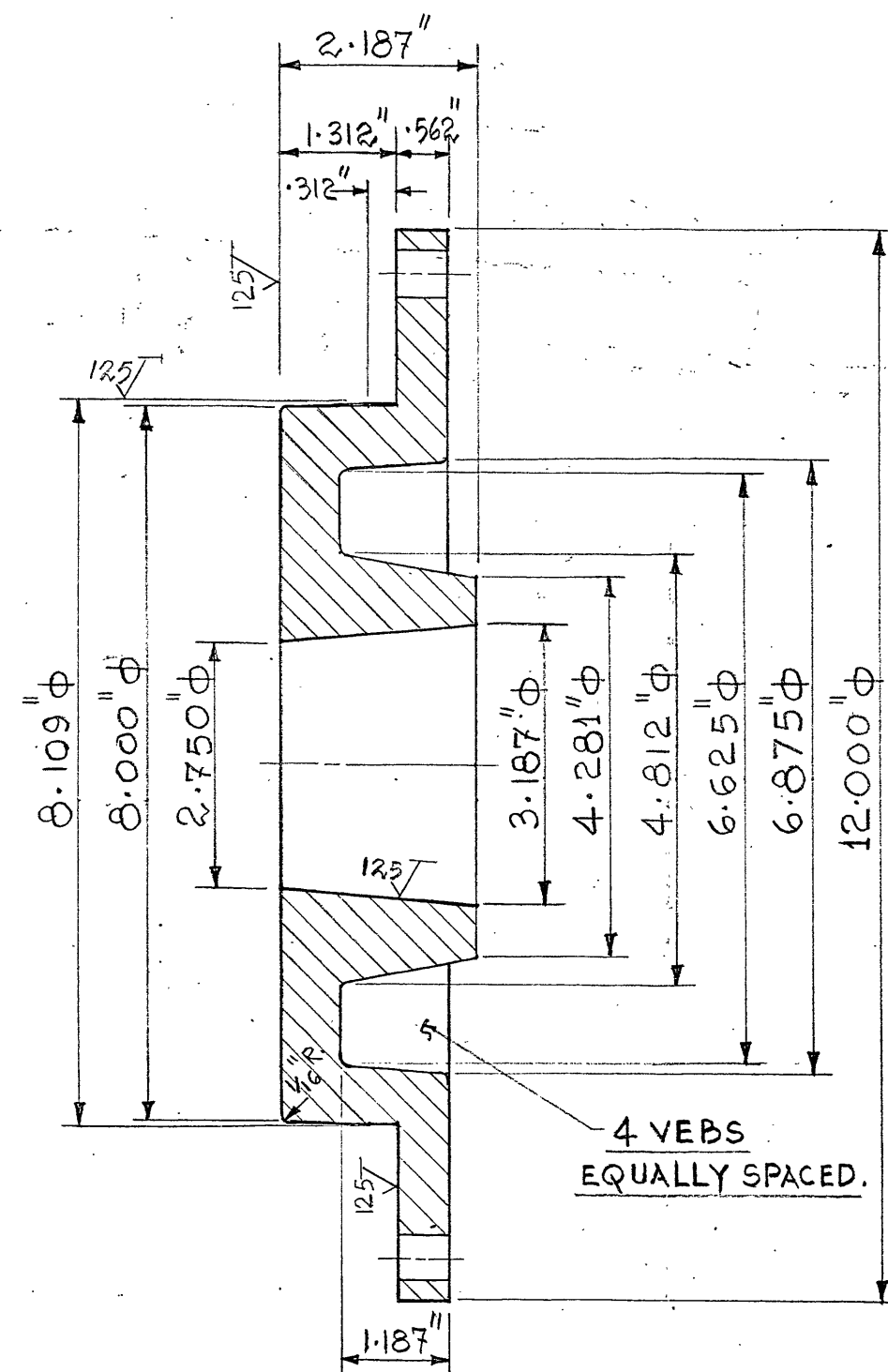
RELEASED FOR TRIAL

CERTIFIED BY ABOVE

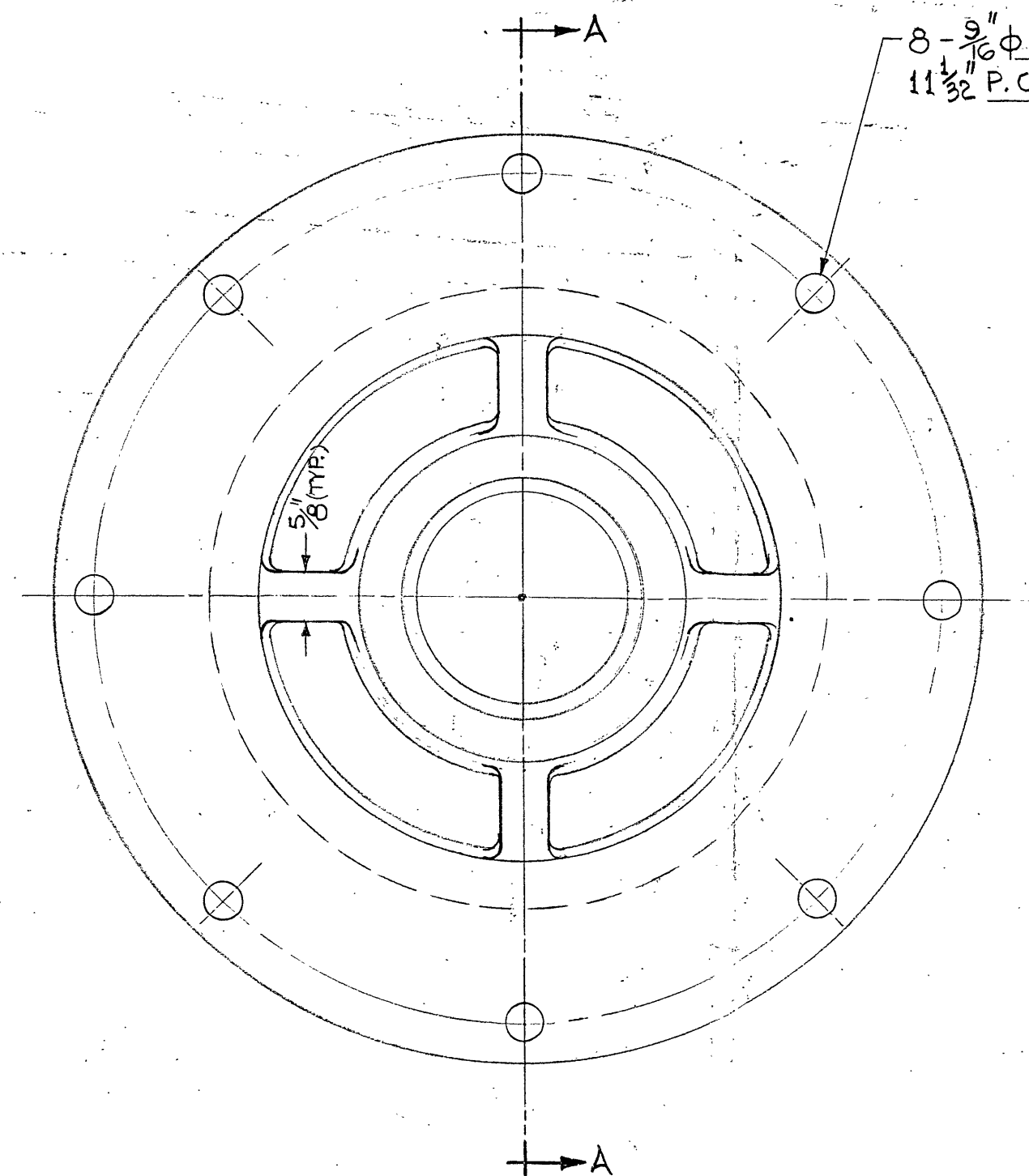
P.M.	
P.E.	
DESIGNATION	SIGNATURE

RASHTRIYA CHEMICALS & FERTILIZER LTD.	
TROMBAY	
SULPHURIC ACID PLANT.	
SPECIAL 90° ELBOW FOR DIRTY PIT SULPHUR PUMP.	
SCALE:- 1/2" = 1"	DATE 26-6-78
APPD:- P.N.M.	DRG. NO. 450-M-126

SN	BY	DATE	REVISIONS	APPROVED
A				
B				
C				



SECT.-AA.



8 - $\frac{9}{16}$ " ϕ HOLES ON
11 $\frac{1}{32}$ " P.C.D. EQUALLY SPACED.

NOTES :-

- ALL DIAMETERS TO BE FINISHED TO ± 0.002 " OR ± 0.050 mm AND OTHER DIMENSIONS TO ± 0.005 " OR ± 0.125 mm. OTHERWISE STATED.
- DE - BURR ALL SHARP CORNERS.
- MACHINING :..... SMOOTH FINE
- EQUIPMENT CODE NO. :- 11-J-1
- STORE'S CODE NO. :- 2243123
- ALL DIMENSIONS ARE IN :- INCHES/mm.

DO NOT SCALE THE DRAWING

IF IN DOUBT ASK

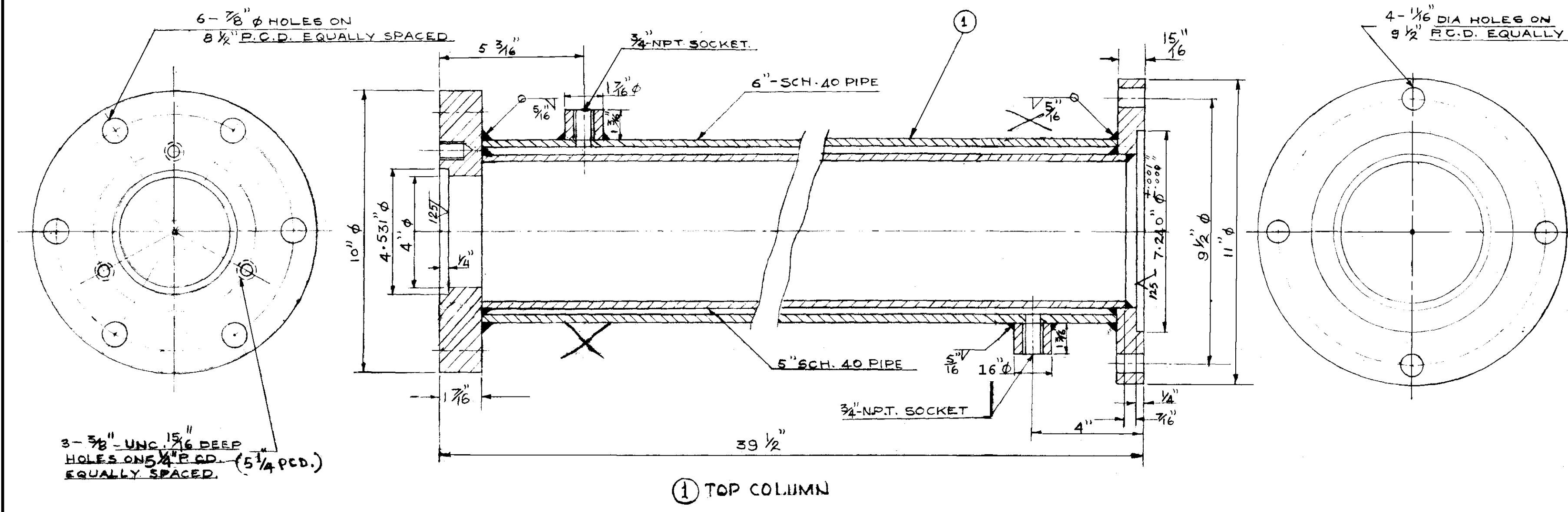
RELEASED FOR TRIAL

PLANT ENGINEER	<i>[Signature]</i>
DESIGNATION	SIGNATURE

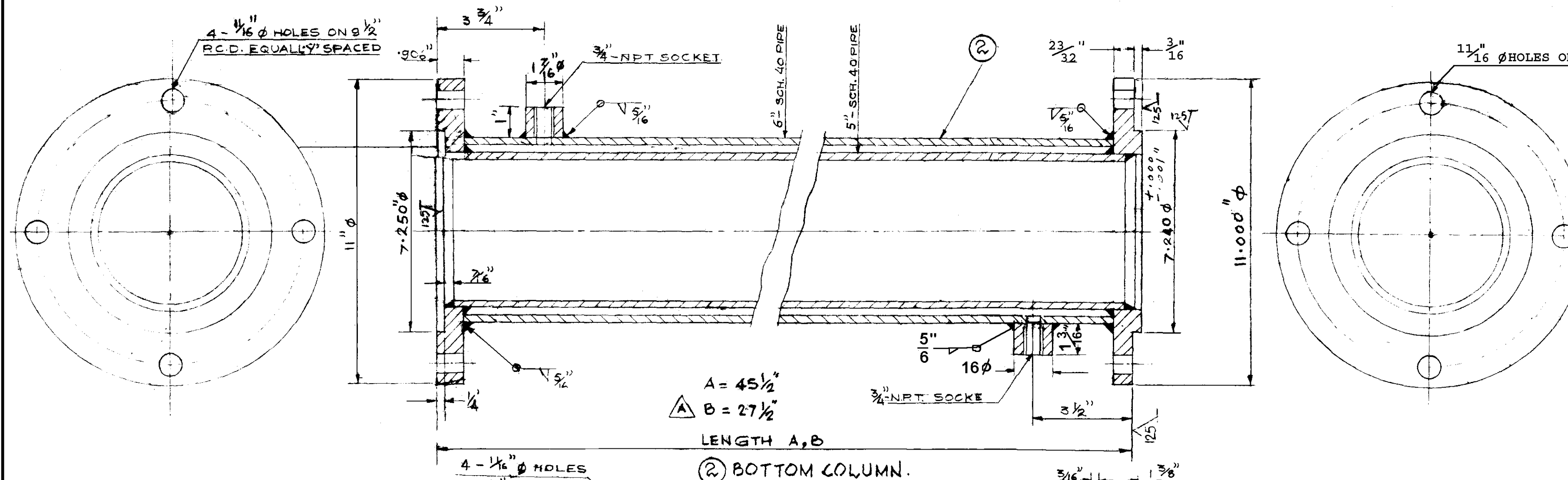
CERTIFIED BY ABOVE

15-210 GR 25	
1	SUCTION COVER
1	CAST IRON
MK NO.	DESCRIPTION
NO. OFF.	MATERIAL
FILE NO.	THE FERTILIZER CORPORATION OF INDIA LTD.
DRN. DR.	TROMBAY UNIT
CHD.	SULPHURIC ACID PLANT.
SUB.	SUCTION COVER FOR
REC.	SULPHUR PUMP.
SCALE $\frac{1}{2}$ " = 1"	DATE 27-6-78
APPROVED <i>[Signature]</i>	DRG. NO. 450-M-129
C	REV. 9

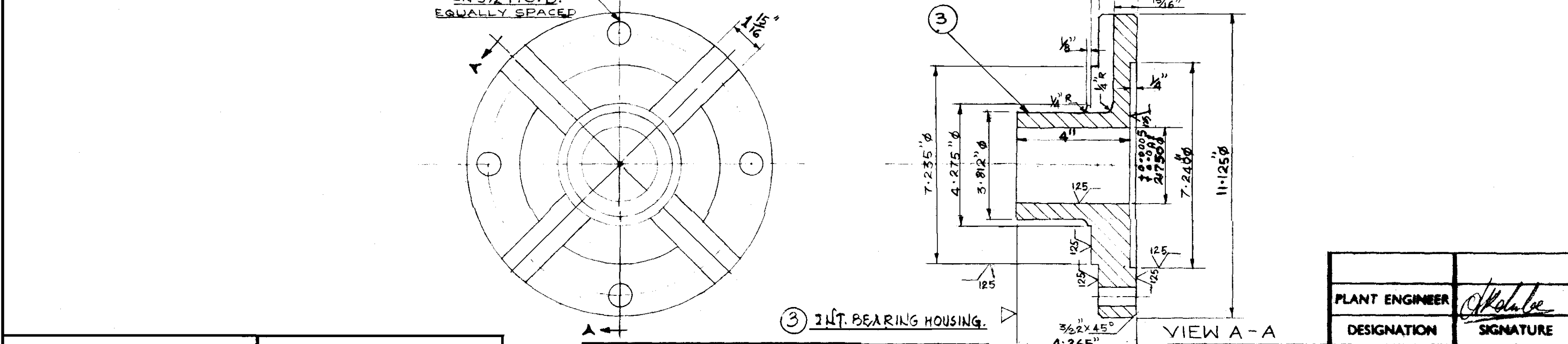
SN	BY	DATE	REVISION	APPROVED
A	R.H.	5.1.93	ADDED LENGTH 27 1/2" FOR SHORT COLUMN PUMP	
B	V.C.B.	13.11.98	ITEM 3: TOLERANCE CHANGED. STORES CODE ADDED.	
C	S.M.M.	30.06.04	ADDED NOTE No. 4 (*)	



- NOTES:-
1. ALL DIAMETERS TO BE FINISHED TO ± 0.002 " AND OTHER DIMENSIONS TO ± 0.005 " OTHERWISE STATED.
 2. DE-BURR ALL SHARP CORNERS.
 3. MACHINING:- SMOOTH $\sqrt{125}$ FINE
 4. EQUIPMENT CODE NO:- 1.1.3.1
 5. STORE'S CODE NO:- SEE NOTE
 6. ALL DIMENSIONS ARE IN :- INCHES
 7. MATERIAL:- AS BELOW



- NOTES:-
1. TOP COLUMN-2243107/4
 2. BOTM. COLUMN
C) LENGTH 'A' 2243115/4
LL) LENGTH 'B' 2243130/3
 3. INTERMEDIATE BRG. HSG. 2243109/4
(FOR BUSH REFER DRG. NO. 450-M-125)
 - *4. JACKETED PORTION TO BE HYDROTESTED AT 10 KG/CM² G.



3	INTERMEDIATE BRG. HOUSING	1	IS-210 GR25	C.I.
2	BOTTOM COLUMN:-PIPES FLANGES 3/4"-3000# SOCKETS	1/1 2 2	A-10662T Gr-B IS-2062 A-105Gr.II	6&5-SCH 40 PIPE
1	TOP COLUMN:-PIPES FLANGES 3/4"-3000# SOCKETS	1/1 2 2	A-10662T Gr-B IS-2062 A-105Gr.II	6&5-SCH 40 PIPE
NO.	DESCRIPTION	NOS. REGD	MATERIAL	REMARKS

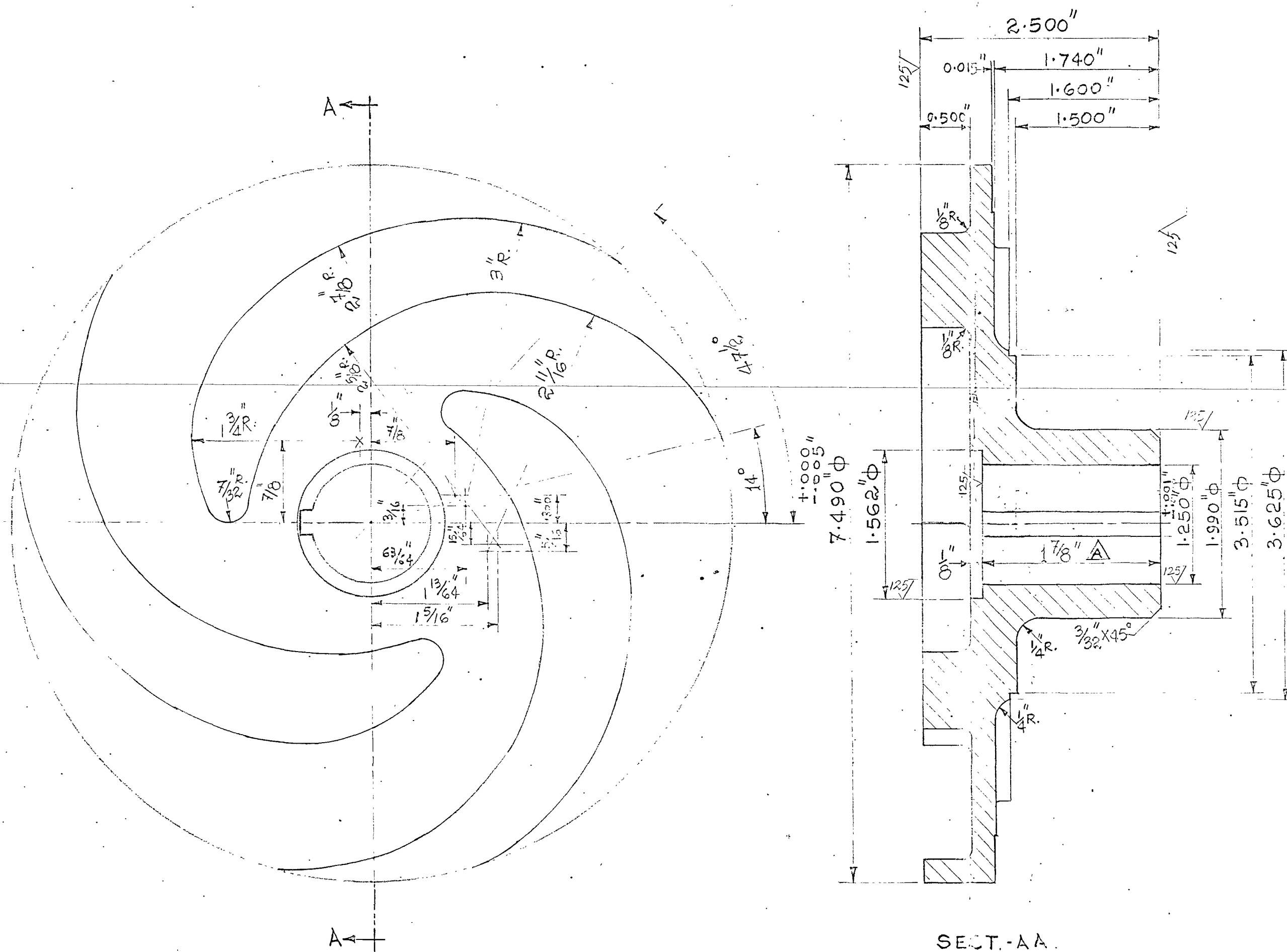
FILE NO.	RASHTRIYA CHEMICALS AND FERTILIZERS LTD		
DRN TRD.	TROMBAY UNIT		
CHD.	SULPHUR ACID PLANT		
SUB.	DETAILS OF PIPE COLUMNS FOR DIRTY PIT SULPHUR PUMP		
REC.	SCALT- 1/3 : 1		
PLANT ENGINEER	SIGNATURE	APPROVED	DATE-27.6.78
DESIGNATION			DRG. NO. 450-M-130
CERTIFIED BY ABOVE			REV C

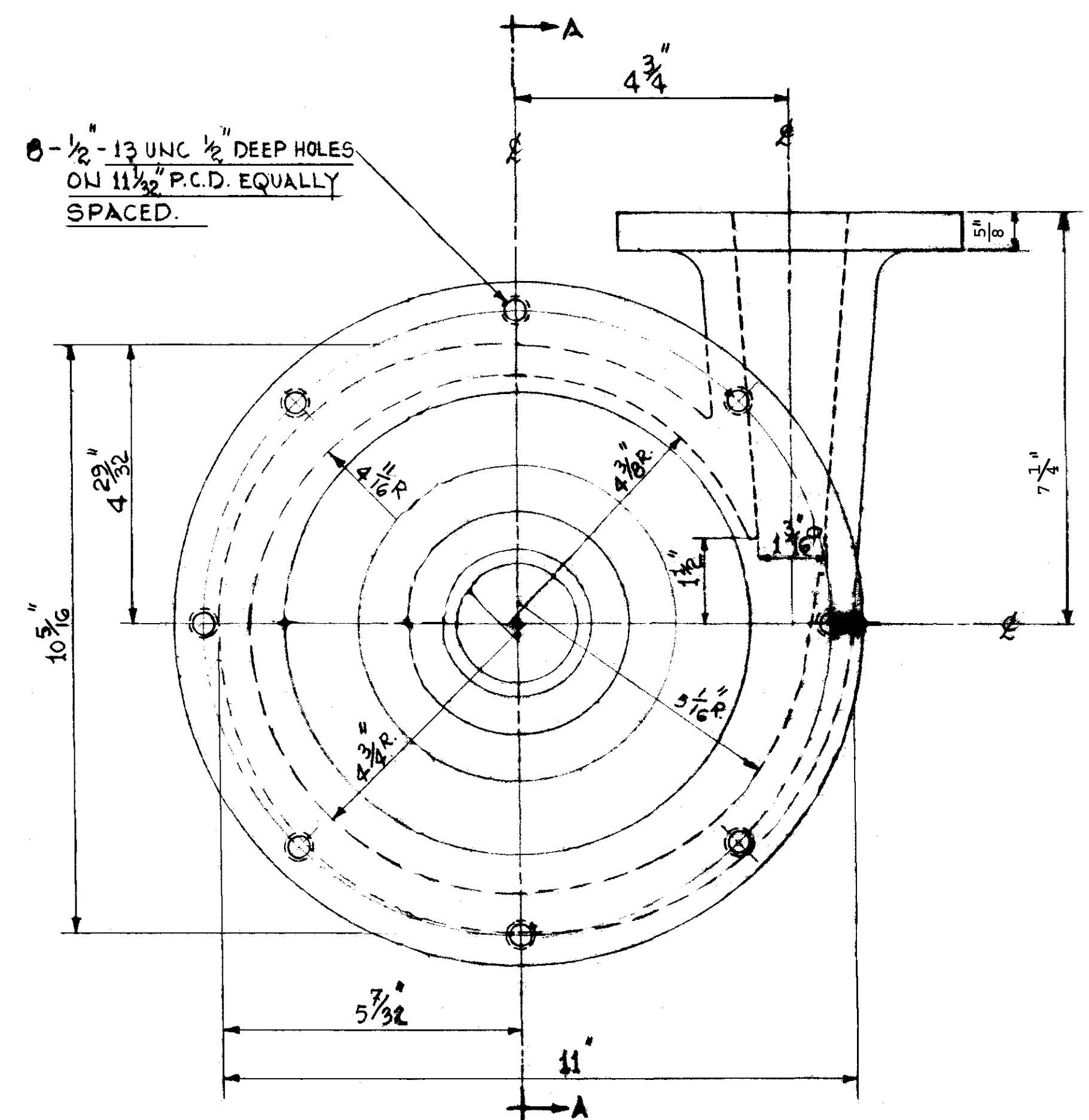
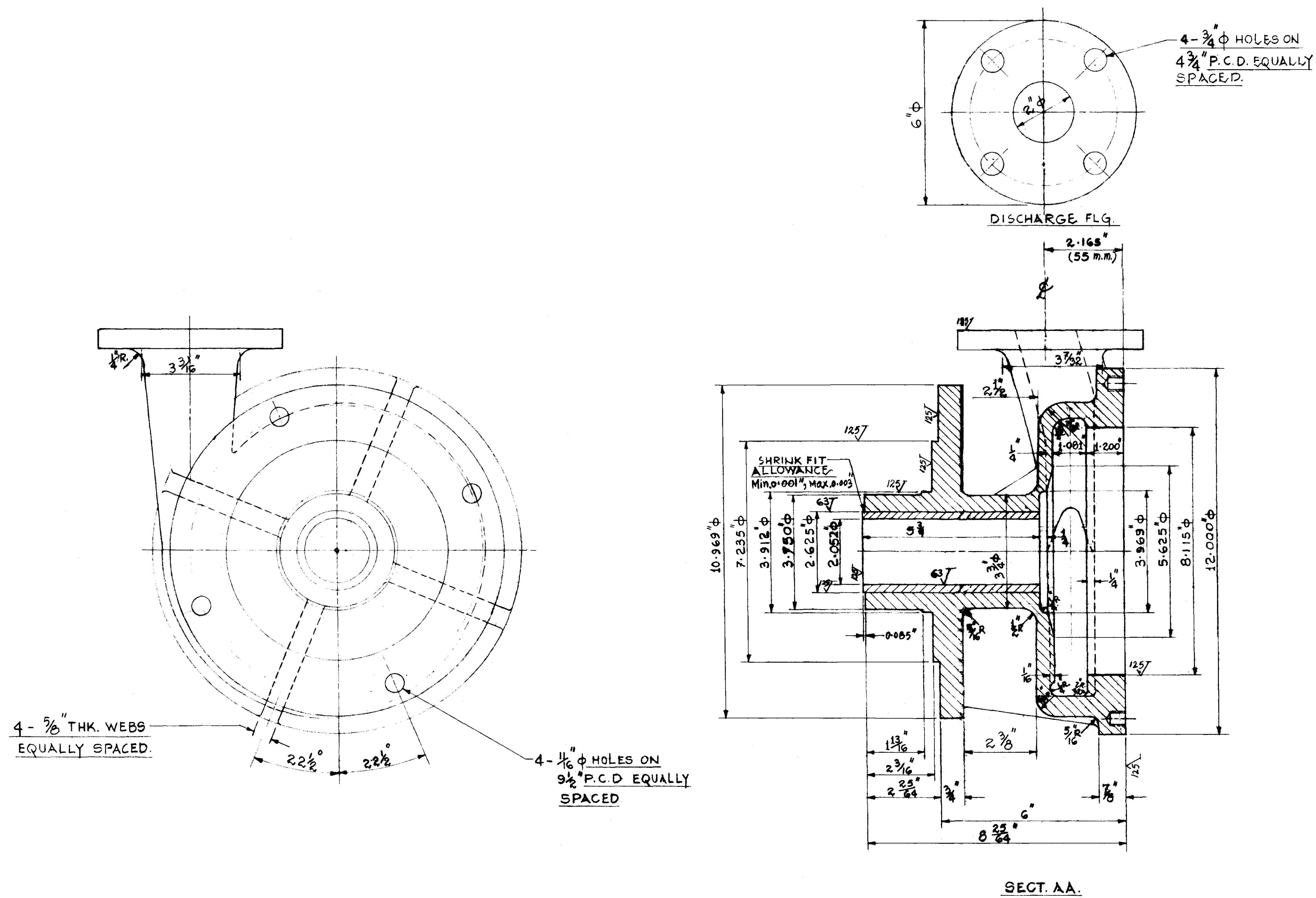
DRG NO.

SN	BY	DATE	REVISIONS	APPROVED
A	RB	28/8/73	CHANGED KEYWAY LENGTH FROM 1 1/8" TO FULL LENGTH (1 7/8").	
B				
C				

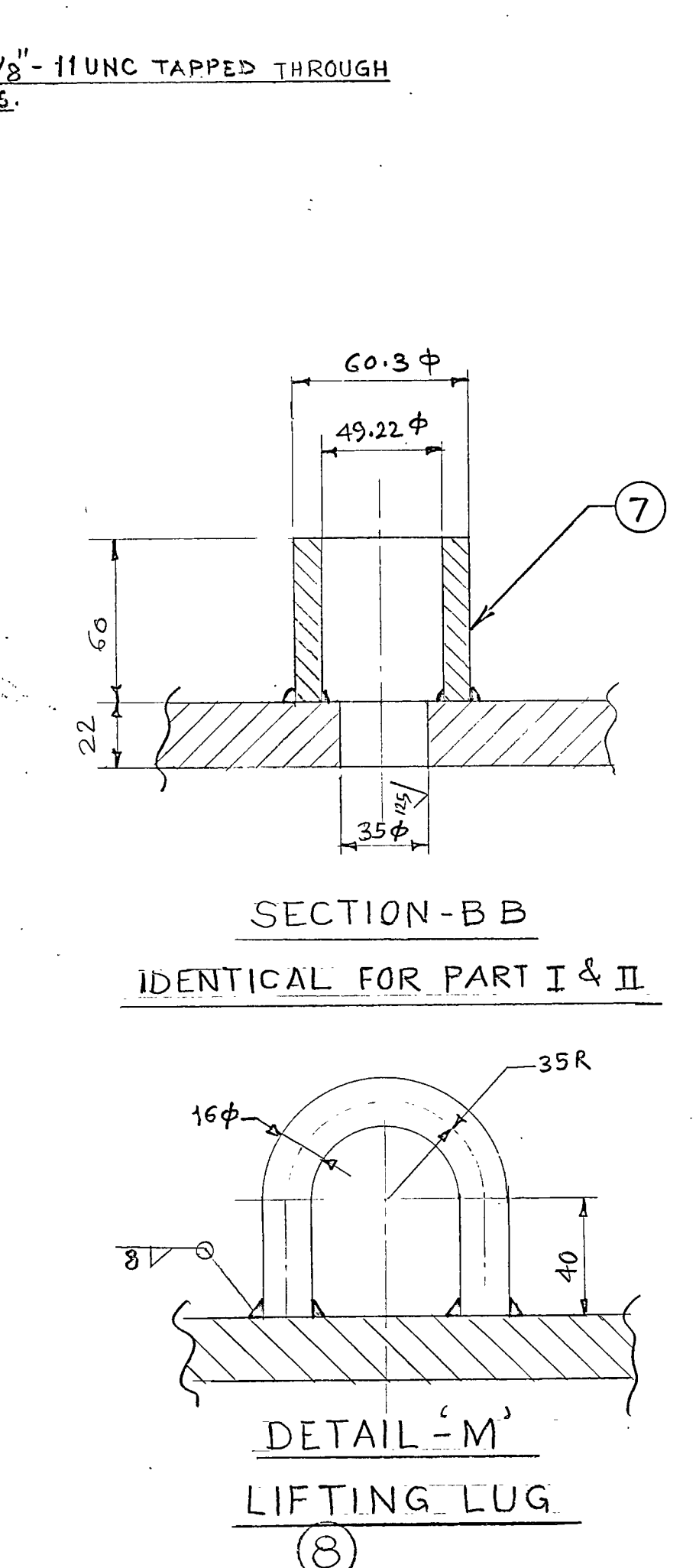
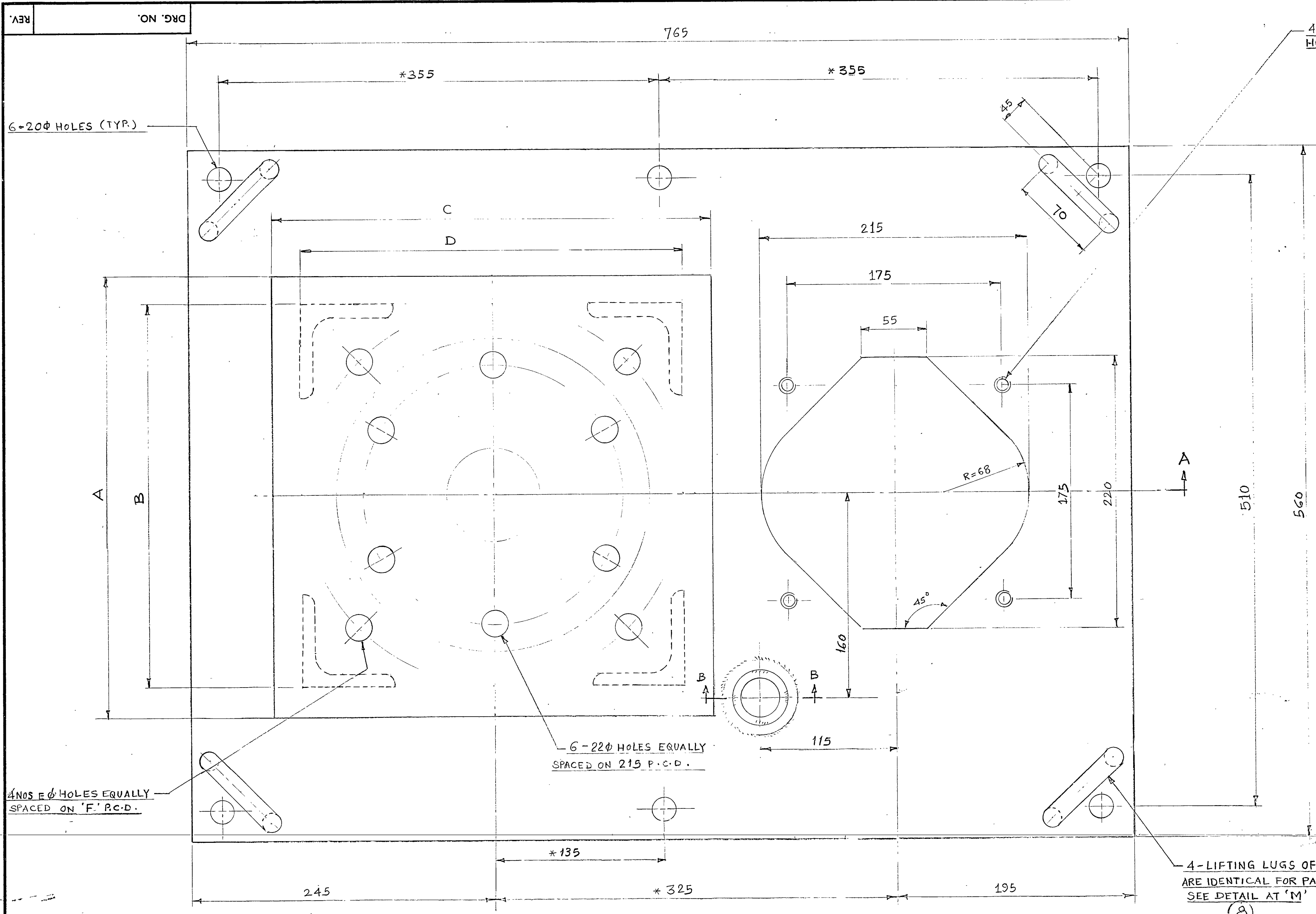
NOTES :-

- ALL DIAMETERS TO BE FINISHED TO $\pm 0.002"$ AND OTHER DIMENSIONS TO $\pm 0.005"$ OTHERWISE STATED.
- DE - BURR. ALL SHARP CORNERS.
- MACHINING :- SMOOTH FINE
- EQUIPMENT CODE NO. :- 111-1
- STORE'S CODE NO. :-
- ALL DIMENSIONS ARE IN - INCHES.
- MATERIAL :- CAST STEEL. A 351-CH6.



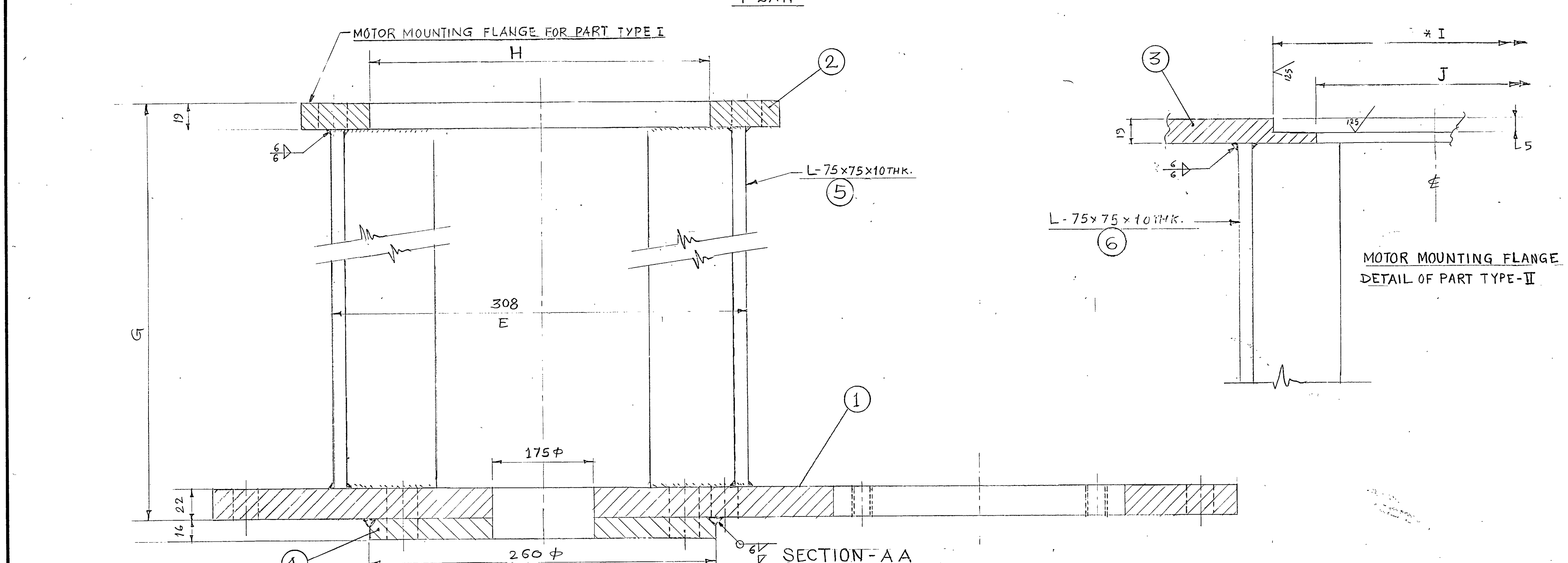


		FILE NO.	RASHTRIYA CHEMICALS AND FERTILIZERS LTD			
		DRN	<div>TROMBAY UNIT</div> <div>SULPHURIC ACID PLANT</div> <div>CASING FOR DIRTY PIT</div> <div>SULPHUR PUMP</div>			
		TRD.				
		CHD.				
		SUB.				
PLANT ENGINEER		REC.		SCALE:	DATE-27-6-78	REV
DESIGNATION	SIGNATURE				DRG. NO	T
CERTIFIED BY ABOVE		APPROVED			450-M-134	RT



	A	B	C	D	E Φ	F P.C.D.	G	H	I	J
PART TYPE-I	355	305	355	300	20	300	428	255	-	-
PART TYPE-II	320	295	320	295	15	265	400	-	+0.05/-0.04 235	178

- NOTES:-
- ALL DIMENSIONS ARE IN MILLIMETERS.
 - ALL DIAMETERS TO BE FINISHED TO $\pm 0.050\text{mm}$ AND OTHER DIMENSIONS TO $\pm 0.125\text{mm}$ UNLESS OTHERWISE STATED.
 - MACHINING:- $\sqrt{\text{SMOOTH}}$ $\sqrt{\text{FINE}}$
 - EQUIPMENT CODE NO. 1.1 J 1
 - STORE'S CODE NO. TYPE I 2243106/3 TYPE II - 2243131
 - DE-BURR ALL SHARP CORNERS.
 - EXCEPT MARKED DIMENSIONS AS A, B, C AND D ETC. IN THE TABLE ALL OTHER DIMENSIONS ARE SAME FOR PART TYPE-I AND PART TYPE-II.
 - GROUND ALL WELDING JOINTS
 - AXIS OF THE FLANGE MARKED NOS. 2 AND 3 MUST BE PERPENDICULAR TO THE BASE PLATE.
 - APPLY ONE COAT OF RED PRIMER OXIDE AFTER ALL MACHINING AND GRINDING.
 - TYPE I MOTOR STAND AND BASE PLATE IS FOR BURNER PPS.
 - TYPE II MOTOR STAND AND BASE PLATE IS FOR TRANSFER PPS.



8.	LIFTING LUGS 16Φ ROD	4 Nos.	IS-226 ST.42	
7.	PIPE 50NB SCH.80 x 60L	1"-	A53 GR. B	
6.	ANGLE-75x75x10THK.x300L	4"-	IS-226 ST.42	
5.	ANGLE-75x75x10THK.x390L	4"-	IS-226 ST.42	
4.	FLANGE-260Φ x 16 THK.	1"-	A-181 GR. II	
3.	FLANGE-320x320x19 THK.	1"-	A-181 GR. II	
2.	FLANGE-355x355x19 THK.	1"-	A-181 GR. II	
1.	BASE PL. 765x560x22 THK.	1 Nos.	IS-226 ST.42	
SRL. NO.	DESCRIPTION	QTY.	MATERIAL	REMARKS.

BILL OF MATERIAL

DRN. TRD.		CHD.		SUB.		REC.		PLANT ENGINEER		DESIGNATION		SIGNATURE		APPROVED		DATE 17-3-93.		DRG. NO.		REV.	
																		450-M-264		A	

RASHTRIYA CHEMICALS & FERTILIZERS LTD.

TROMBAY UNIT

PLANT: SULPHURIC ACID

MOTOR STAND AND BASE PLATE FOR SULPHUR PUMP.

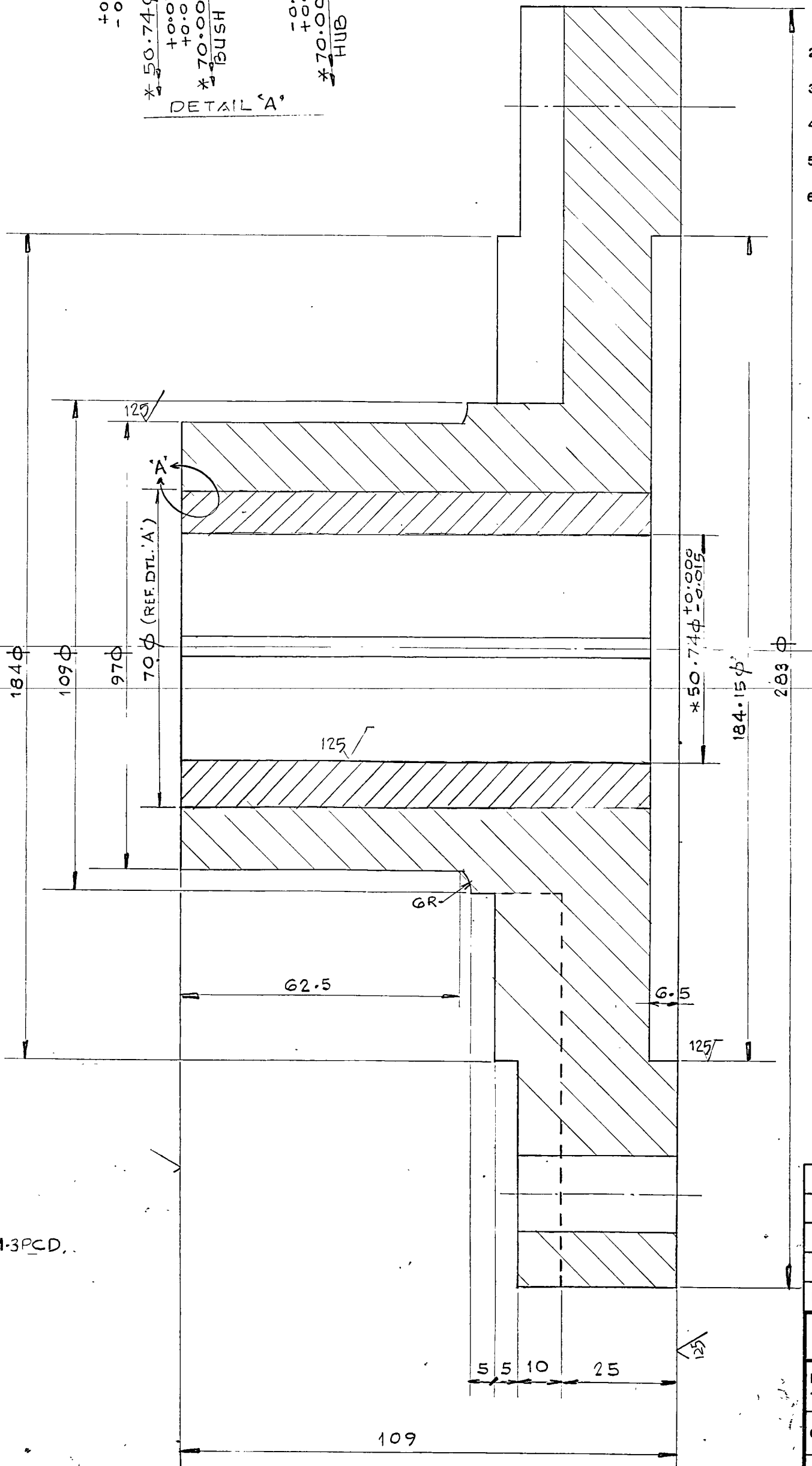
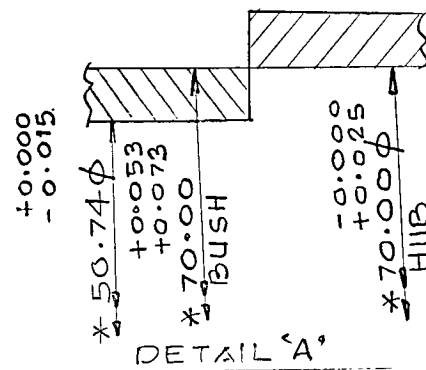
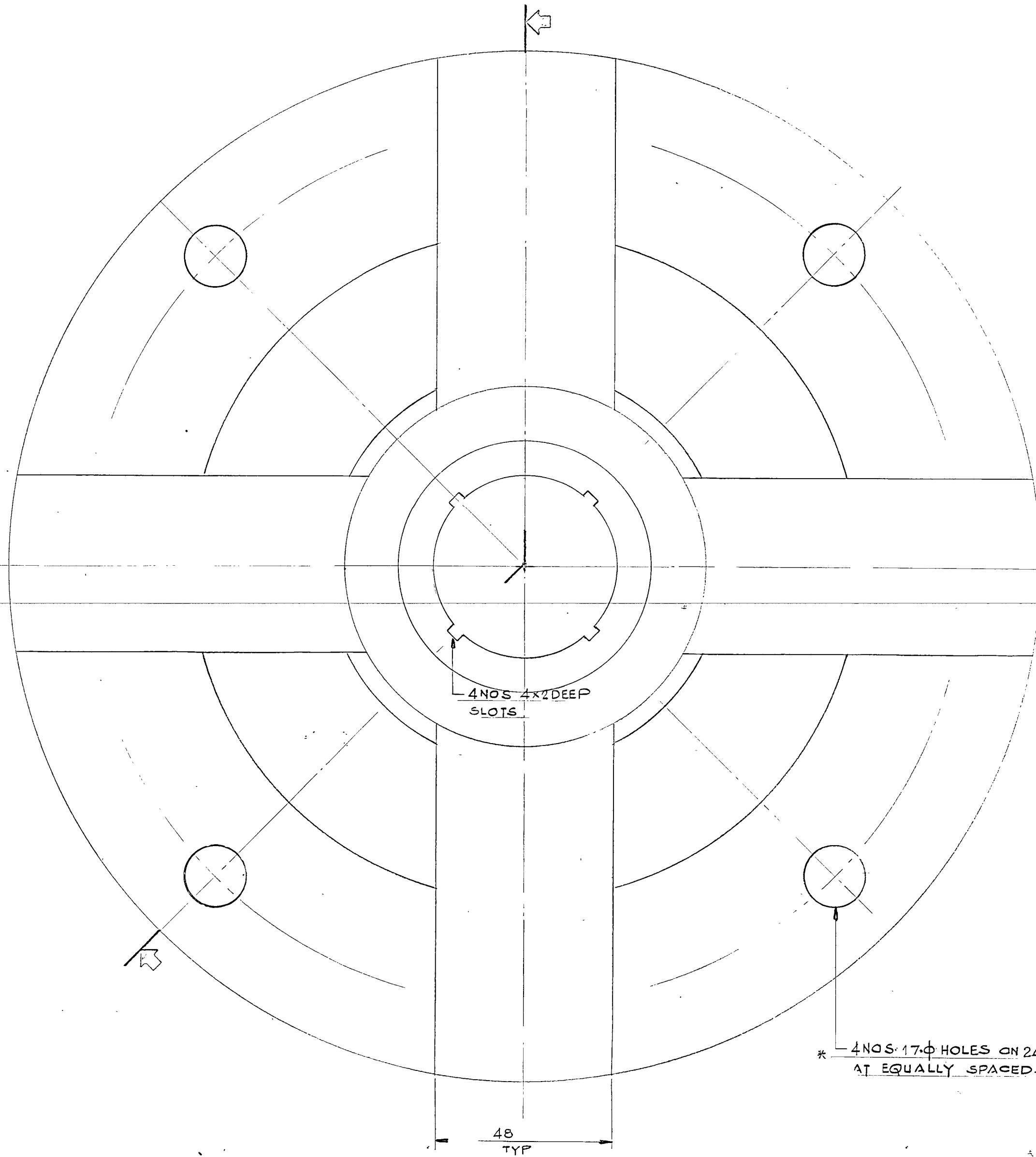
SCALE 1:2

DATE 17-3-93.

DRG. NO.

REV.

SN	BY	DATE	REVISIONS	APPROVED
A				
B				
C				



- NOTES:-
- ALL DIAMETERS TO BE FINISHED TO ± 0.002 OR ± 0.050 m.m. AND OTHER DIMENSIONS TO ± 0.005 OR ± 0.125 m.m. OTHERWISE STATED.
 - DE-BURR ALL SHARP CORNERS.
 - MACHINING $\frac{63}{\sqrt{\quad}}$ SMOOTH $\frac{125}{\sqrt{\quad}}$ FINE $\frac{125}{\sqrt{\quad}}$ ALL OVER
 - EQUIPMENTS CODE No.: 1.1 J-1
 - STORES CODE No.:
 - ALL DIMENSIONS ARE IN- INCHES/mm.

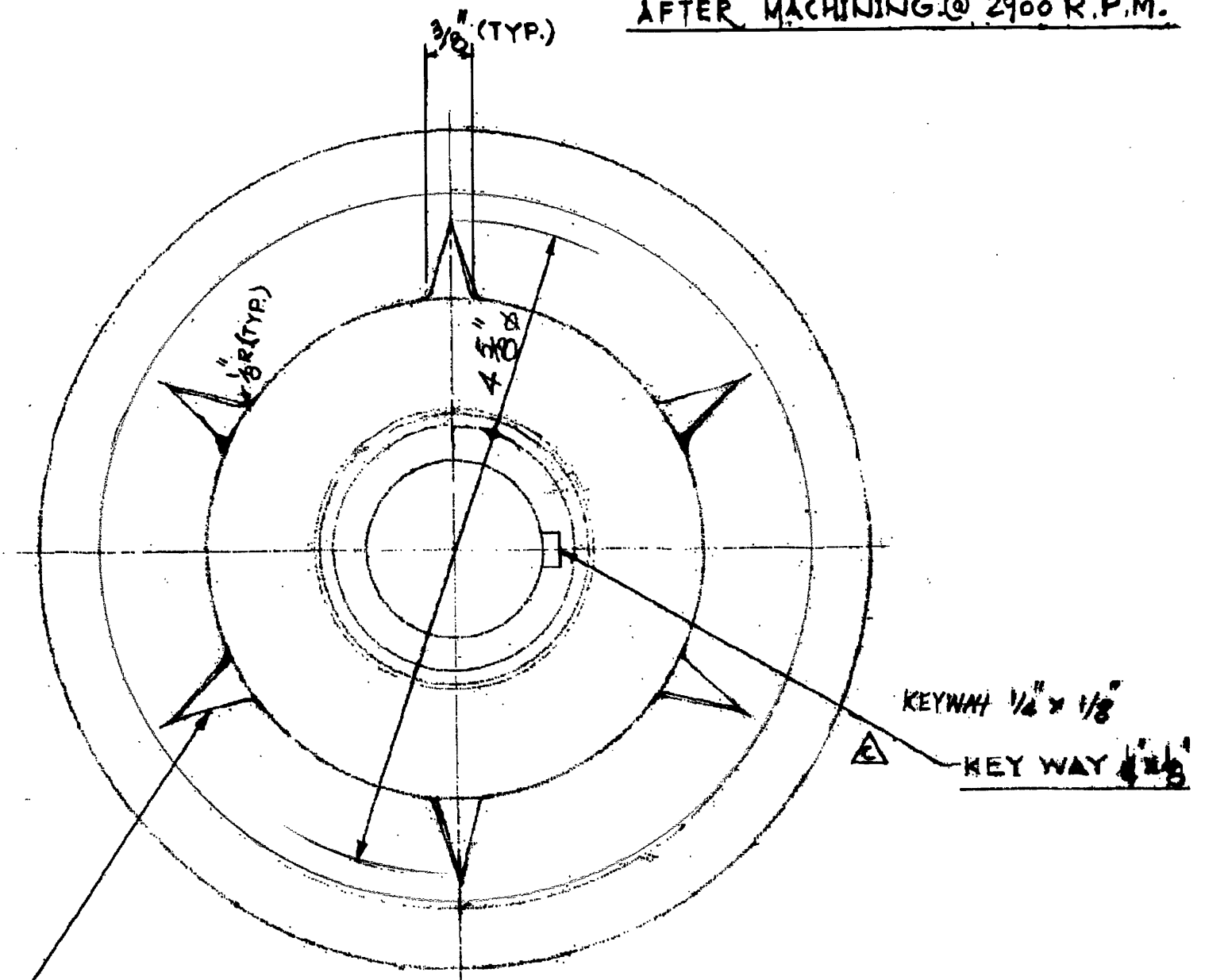
2	BUSH	1	EN 8
1	HUB	1	A-48 CL 50
MK. NO.	DESCRIPTION	NO. OFF	MATERIAL
	RASHTRIYA CHEMICALS AND FERTILIZERS LTD.		
DRN.	T. B. J.		
TRD.			
CHD.			
SUB.			
REC.			
PLANT ENGINEER			
DESIGNATION			
SIGNATURE			
CERTIFIED BY ABOVE			
APPROVED			
SCALE:- 1:1			
DATE 2-12-1996			
DRG. NO.			
REV.			
450-M-280			

Technical drawing of a mechanical part, likely a valve end view, showing dimensions and tolerances. The drawing includes a cross-section of a component with various features and dimensions.


Key dimensions and features:

- Overall width: $2 \frac{1}{16}''$
- Top width: $2 \frac{7}{16}''$
- Internal width: $1 \frac{13}{16}''$
- Internal width: $1 \frac{3}{4}''$
- Internal width: $1 \frac{1}{2}''$
- Internal width: $1 \frac{1}{4}''$
- Angle: 10°
- Radius: $5 \frac{11}{32}'' R$
- Radius: $5 \frac{1}{32}'' R$
- Angle: 125°
- Internal width: $1 \frac{1}{16}''$
- Internal width: $1 \frac{1}{8}''$
- Internal width: $1 \frac{1}{4}''$
- Internal width: $1 \frac{1}{2}''$
- Internal width: $1 \frac{3}{4}''$
- Internal width: $1 \frac{1}{2}''$
- Internal width: $1 \frac{1}{4}''$
- Internal width: $1 \frac{1}{8}''$
- Internal width: $1 \frac{1}{16}''$
- Internal width: $1 \frac{1}{32}''$
- Internal width: $1 \frac{1}{64}''$
- Internal width: $1 \frac{1}{128}''$
- Internal width: $1 \frac{1}{256}''$
- Internal width: $1 \frac{1}{512}''$
- Internal width: $1 \frac{1}{1024}''$
- Internal width: $1 \frac{1}{2048}''$
- Internal width: $1 \frac{1}{4096}''$
- Internal width: $1 \frac{1}{8192}''$
- Internal width: $1 \frac{1}{16384}''$
- Internal width: $1 \frac{1}{32768}''$
- Internal width: $1 \frac{1}{65536}''$
- Internal width: $1 \frac{1}{131072}''$
- Internal width: $1 \frac{1}{262144}''$
- Internal width: $1 \frac{1}{524288}''$
- Internal width: $1 \frac{1}{1048576}''$
- Internal width: $1 \frac{1}{2097152}''$
- Internal width: $1 \frac{1}{4194304}''$
- Internal width: $1 \frac{1}{8388608}''$
- Internal width: $1 \frac{1}{16777216}''$
- Internal width: $1 \frac{1}{33554432}''$
- Internal width: $1 \frac{1}{67108864}''$
- Internal width: $1 \frac{1}{134217728}''$
- Internal width: $1 \frac{1}{268435456}''$
- Internal width: $1 \frac{1}{536870912}''$
- Internal width: $1 \frac{1}{1073741824}''$
- Internal width: $1 \frac{1}{2147483648}''$
- Internal width: $1 \frac{1}{4294967296}''$
- Internal width: $1 \frac{1}{8589934592}''$
- Internal width: $1 \frac{1}{17179869184}''$
- Internal width: $1 \frac{1}{34359738368}''$
- Internal width: $1 \frac{1}{68719476736}''$
- Internal width: $1 \frac{1}{137438953472}''$
- Internal width: $1 \frac{1}{274877906944}''$
- Internal width: $1 \frac{1}{549755813888}''$
- Internal width: $1 \frac{1}{1099511627776}''$
- Internal width: $1 \frac{1}{2199023255552}''$
- Internal width: $1 \frac{1}{4398046511104}''$
- Internal width: $1 \frac{1}{8796093022208}''$
- Internal width: $1 \frac{1}{17592186044416}''$
- Internal width: $1 \frac{1}{35184372088832}''$
- Internal width: $1 \frac{1}{70368744177664}''$
- Internal width: $1 \frac{1}{140737488355328}''$
- Internal width: $1 \frac{1}{281474976710656}''$
- Internal width: $1 \frac{1}{562949953421312}''$
- Internal width: $1 \frac{1}{1125899906842624}''$
- Internal width: $1 \frac{1}{2251799813685248}''$
- Internal width: $1 \frac{1}{4503599627370496}''$
- Internal width: $1 \frac{1}{9007199254740992}''$
- Internal width: $1 \frac{1}{18014398509481984}''$
- Internal width: $1 \frac{1}{36028797018963968}''$
- Internal width: $1 \frac{1}{72057594037927936}''$
- Internal width: $1 \frac{1}{144115188075855872}''$
- Internal width: $1 \frac{1}{288230376151711744}''$
- Internal width: $1 \frac{1}{576460752303423488}''$
- Internal width: $1 \frac{1}{1152921504606846976}''$
- Internal width: $1 \frac{1}{2305843009213693952}''$
- Internal width: $1 \frac{1}{4611686018427387904}''$
- Internal width: $1 \frac{1}{9223372036854775808}''$
- Internal width: $1 \frac{1}{18446744073709551616}''$
- Internal width: $1 \frac{1}{36893488147419103232}''$
- Internal width: $1 \frac{1}{73786976294838206464}''$
- Internal width: $1 \frac{1}{147573952589676412928}''$
- Internal width: $1 \frac{1}{295147905179352825856}''$
- Internal width: $1 \frac{1}{590295810358705651712}''$
- Internal width: $1 \frac{1}{1180591620717411303424}''$
- Internal width: $1 \frac{1}{2361183241434822606848}''$
- Internal width: $1 \frac{1}{4722366482869645213696}''$
- Internal width: $1 \frac{1}{9444732965739290427392}''$
- Internal width: $1 \frac{1}{18889465931478580854784}''$
- Internal width: $1 \frac{1}{37778931862957161709568}''$
- Internal width: $1 \frac{1}{75557863725914323419136}''$
- Internal width: $1 \frac{1}{151115727451828646838272}''$
- Internal width: $1 \frac{1}{302231454903657293676544}''$
- Internal width: $1 \frac{1}{604462909807314587353088}''$
- Internal width: $1 \frac{1}{1208925819614629174706176}''$
- Internal width: $1 \frac{1}{2417851639229258349412352}''$
- Internal width: $1 \frac{1}{4835703278458516698824704}''$
- Internal width: $1 \frac{1}{9671406556917033397649408}''$
- Internal width: $1 \frac{1}{19342813113834066795298816}''$
- Internal width: $1 \frac{1}{38685626227668133590597632}''$
- Internal width: $1 \frac{1}{77371252455336267181195264}''$
- Internal width: $1 \frac{1}{154742504910672534362390528}''$
- Internal width: $1 \frac{1}{309485009821345068724781056}''$
- Internal width: $1 \frac{1}{618970019642690137449562112}''$
- Internal width: $1 \frac{1}{1237940039285380274899124224}''$
- Internal width: $1 \frac{1}{2475880078570760549798248448}''$
- Internal width: $1 \frac{1}{4951760157141521099596496896}''$
- Internal width: $1 \frac{1}{9903520314283042199192993792}''$
- Internal width: $1 \frac{1}{19807040628566084398385987584}''$
- Internal width: $1 \frac{1}{39614081257132168796771975168}''$
- Internal width: $1 \frac{1}{79228162514264337593543950336}''$
- Internal width: $1 \frac{1}{158456325028528675187087900672}''$
- Internal width: $1 \frac{1}{316912650057057350374175801344}''$
- Internal width: $1 \frac{1$

6-VERBS EQUALLY
SPACED.



8. IMPELLER SHOULD BE DYNAMICALLY BALANCED
AFTER MACHINING @ 2900 R.P.M.

FILE NO.		RASHTRIYA CHEMICALS AND FERTILIZERS LTD.	
DRN TRD.	CMR	TROMBAY UNIT	
CHD.	11/11/11	<u>SULPHURIC ACID PLANT.</u>	
SUB.		<u>IMPELLER FOR SULPHUR DIRT</u>	
REC.		<u>PIT PUMP. (NEW)</u>	
APPROVED		SCALE FULL SIZE	DATE 19/11/78
		DRG. NO	REV
		450-M-116	D